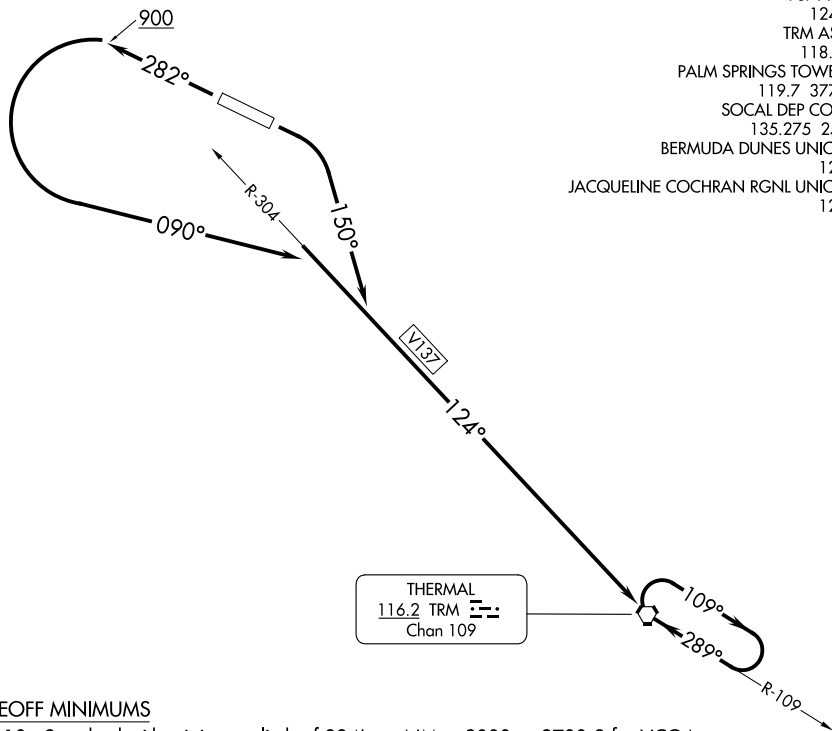


(KUDD1.KUDD) 23334

AL-5848 (FAA)

BERMUDA DUNES (UDD)  
PALM SPRINGS, CALIFORNIA

# BERMUDA DUNES ONE DEPARTURE (OBSTACLE)



- PSP ASOS 124.65
- TRM ASOS 118.325
- PALM SPRINGS TOWER ★ 119.7 377.05
- SOCAL DEP CON ★ 135.275 251.1
- BERMUDA DUNES UNICOM 122.8
- JACQUELINE COCHRAN RGNL UNICOM 123.0

THERMAL  
116.2 TRM  
Chan 109

### TAKEOFF MINIMUMS

- Rwy 10: Standard with minimum climb of 334' per NM to 3000 or 2700-3 for VCOA.
- Rwy 28: Standard with minimum climb of 490' per NM to 2300 or 2700-3 for VCOA.

NOTE: Chart not to scale.

### DEPARTURE ROUTE DESCRIPTION

**TAKEOFF RUNWAY 10:** Climbing right turn heading 150° to intercept TRM R-304 to TRM VORTAC, thence . . . or, obtain ATC approval for VCOA when requesting IFR clearance; climb in visual conditions to cross Bermuda Dunes Airport at or above 2600, then on TRM R-304 to TRM VORTAC, thence . . .

**TAKEOFF RUNWAY 28:** Climb heading 282° to 900 then climbing left turn heading 090° to intercept TRM R-304 to TRM VORTAC, thence . . . or, obtain ATC approval for VCOA when requesting IFR clearance; climb in visual conditions to cross Bermuda Dunes Airport at or above 2600, then on TRM R-304 to TRM VORTAC, thence . . .

. . . continue climbing in TRM VORTAC holding pattern to cross TRM VORTAC at or above MEA/MCA for route of flight.

BERMUDA DUNES ONE DEPARTURE (OBSTACLE)

PALM SPRINGS, CALIFORNIA  
BERMUDA DUNES (UDD)

(KUDD1.KUDD) 15SEP16

SW-3, 11 JUL 2024 to 08 AUG 2024

SW-3, 11 JUL 2024 to 08 AUG 2024