

WAAS CH <b>65717</b> <b>W20A</b>	APP CRS <b>195°</b>	Rwy Idg <b>5900</b> TDZE <b>984</b> Apt Elev <b>984</b>
----------------------------------------	------------------------	---------------------------------------------------------------

# RNAV (GPS) RWY 20

FAYETTEVILLE MUNI (FYM)

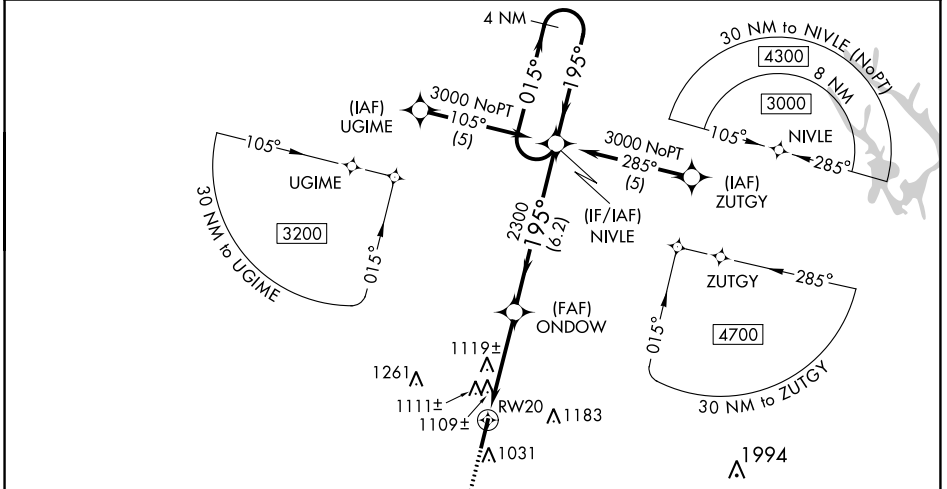
RNP APCH - GPS

**⚠** For uncompensated Baro-VNAV systems, LNAV/VNAV NA below -16°C (4°F) or above 46°C (114°F). Rwy 20 helicopter visibility reduction below ¾ SM NA. When local altimeter setting not received use Huntsville Exec Tom Sharp Jr Fld altimeter setting and increase LPV DA to 1373 feet and all visibilities ½ SM; LNAV/VNAV DA to 1561 feet and all visibilities ¼ SM; increase all MDAs 120 feet and LNAV Cat C/D and Circling Cat C visibility ½ SM, Circling Cat D visibility ¼ SM. Baro-VNAV and VDP NA when using Huntsville Exec Tom Sharp Jr Fld altimeter setting. Inoperative table does not apply to LNAV/VNAV all Cats. Inoperative table does not apply to LNAV Cat C when using Huntsville Exec Tom Sharp Jr Fld altimeter setting.

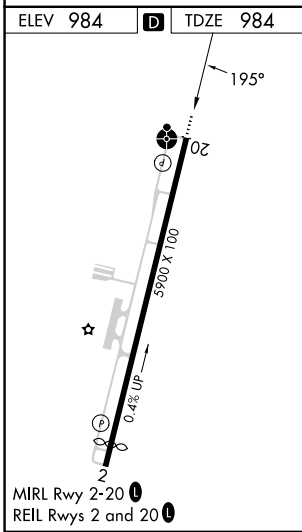
**ODALS**

**MISSED APPROACH:** Climb to 3000 direct EZBUB and hold.

AWOS-3 <b>135.275</b>	HUNTSVILLE APP CON * <b>125.6 354.1</b>	CLNC DEL (GCO) <b>121.725</b>	UNICOM <b>122.8 (CTAF)</b>
--------------------------	--------------------------------------------	----------------------------------	-------------------------------



ELEV 984	<b>D</b>	TDZE 984
----------	----------	----------



**EZBUB** 3000

VGSI and RNAV glidepath not coincident (VGSI Angle 3.00/TCH 20).

**NIVLE** 4 NM Holding Pattern

\*LNAV only.

ONDOW 2300

RW20 2300

GP 3.00° TCH 40

CATEGORY	A	B	C	D
LPV DA	1260-1 276 (300-1)			
LNAV/VNAV DA	1448-1¾ 464 (500-1¾)			
LNAV MDA	1380-¾ 396 (400-¾)			1380-1¼ 396 (400-1¼)
CIRCLING	1420-1 436 (500-1)	1540-1 556 (600-1)	1580-1½ 596 (600-1½)	1580-2 596 (600-2)

SE-1, 11 JUL 2024 to 08 AUG 2024

SE-1, 11 JUL 2024 to 08 AUG 2024