

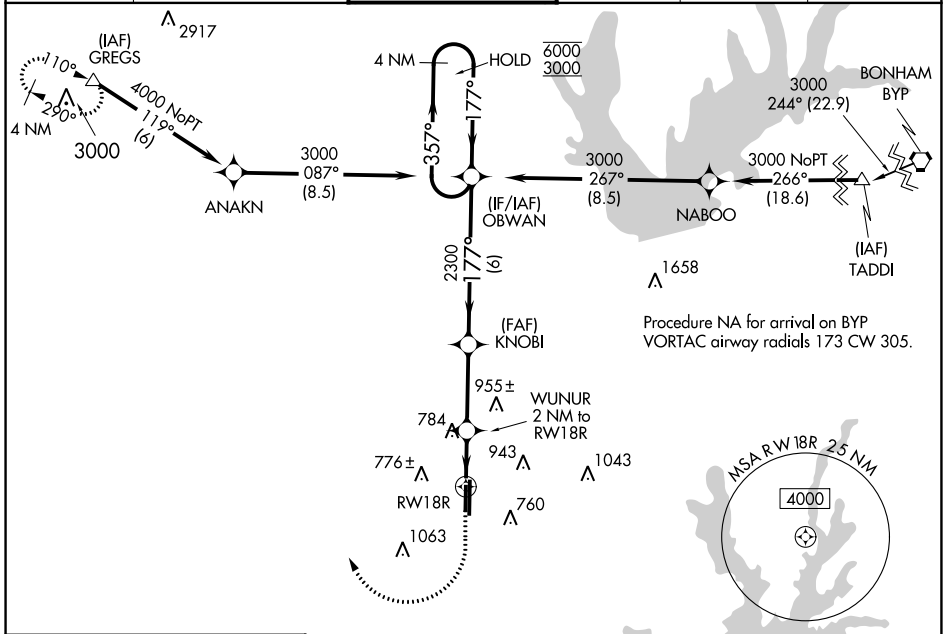
WAAS CH <b>97643</b> <b>W18B</b>	APP CRS <b>177°</b>	Rwy Idg TDZE Apt Elev	18R <b>5003</b> <b>643</b> <b>643</b>	18L <b>6502</b> <b>642</b> <b>643</b>
--	------------------------	-----------------------------	--	--

# RNAV (GPS) RWY 18R

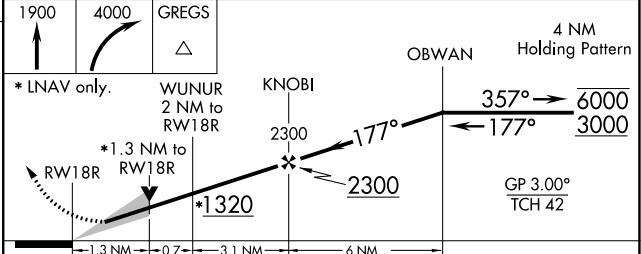
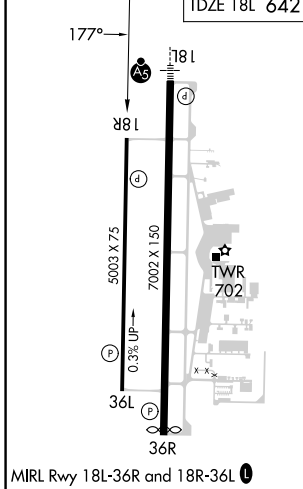
DENTON ENTERPRISE (D.T.O)

RNP APCH.		MISSED APPROACH: Climb to 1900 then climbing right turn to 4000 direct GREGS and hold.			
<p><b>▽</b> For uncompensated Baro-VNAV systems, LNAV/VNAV NA below -9°C or above 54°C.</p>					

ATIS <b>119.325</b>	REGIONAL APP CON <b>118.1 306.95</b>	DENTON TOWER* <b>119.95 (CTAF) 0</b>	GND CON <b>123.95</b>	CLNC DEL <b>123.95</b>	UNICOM <b>122.95</b>
------------------------	---	---	--------------------------	---------------------------	-------------------------



ELEV 643	<b>D</b>	TDZE 18R 643 TDZE 18L 642
----------	----------	------------------------------



CATEGORY	A	B	C	D
LPV DA		893-3/4	250 (300-3/4)	
LNAV/VNAV DA		926-7/8	283 (300-7/8)	
LNAV MDA	1100-1	457 (500-1)	1100-13/8	457 (500-13/8)
SIDESTEP 18L	1100-1 1/4	458 (500-1 1/4)	1100-1 3/4	1100-2 1/4
			458 (500-1 3/4)	458 (500-2 1/4)
<b>C</b> CIRCLING	1100-1	1260-1	1380-2	1380-2 1/4
	457 (500-1)	617 (700-1)	737 (800-2)	737 (800-2 1/4)

SC-2, 11 JUL 2024 to 08 AUG 2024

SC-2, 11 JUL 2024 to 08 AUG 2024