

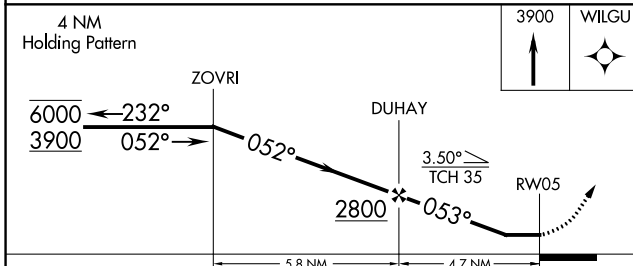
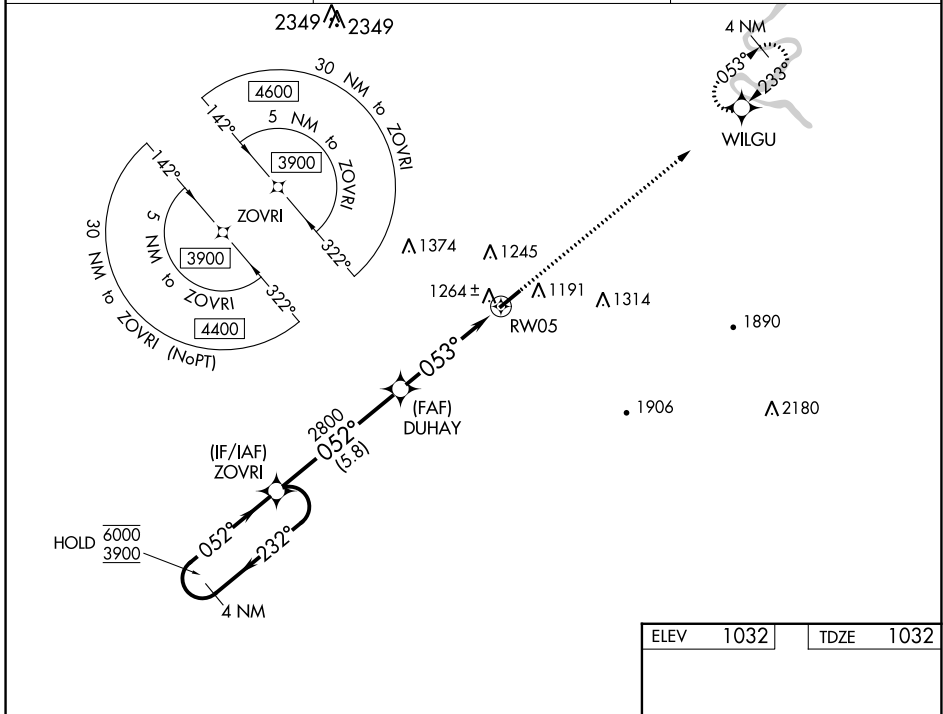
WAAS CH <b>81844</b> <b>W05A</b>	APP CRS <b>053°</b>	Rwy ldg TDZE Apt Elev	<b>5000</b> <b>1032</b> <b>1032</b>
----------------------------------------	------------------------	-----------------------------	-------------------------------------------

# RNAV (GPS) RWY 5

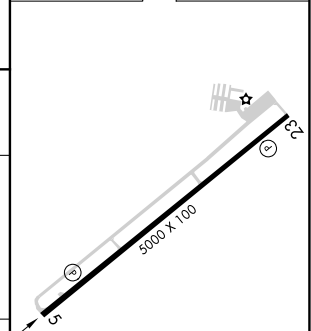
WARREN COUNTY MEML (R.N.C)

RNP APCH - GPS.	MISSED APPROACH: Climb to 3900 direct WILGU and hold, continue climb-in-hold to 3900.
<b>⚠</b> Rwy 5 helicopter visibility reduction below 1 SM NA. Straight-in Rwy 5 NA at night, Circling Rwy 5 NA at night.	

AWOS-3 <b>135.525</b>	MEMPHIS CENTER <b>128.15 323.125</b>	UNICOM <b>123.05 (CTAF) 0</b>
--------------------------	-----------------------------------------	----------------------------------



ELEV 1032	TDZE 1032
-----------	-----------



CATEGORY	A	B	C	D
LP MDA	1500-1	468 (500-1)	1500-1 $\frac{3}{8}$	468 (500-1 $\frac{3}{8}$ )
LNAV MDA	1520-1	488 (500-1)	1520-1 $\frac{3}{8}$	488 (500-1 $\frac{3}{8}$ )
<b>C</b> CIRCLING	1600-1	568 (600-1)	1600-1 $\frac{1}{2}$ 568 (600-1 $\frac{1}{2}$ )	1620-2 588 (600-2)

REIL Rwy 5 and 23  
MIRL Rwy 5-23 0

SE-1, 11 JUL 2024 to 08 AUG 2024

SE-1, 11 JUL 2024 to 08 AUG 2024