

WAAS CH <b>62827</b> <b>W23A</b>	APP CRS <b>232°</b>	Rwy Idg TDZE Apt Elev	<b>7100</b> <b>93</b> <b>93</b>
--	------------------------	-----------------------------	---------------------------------------

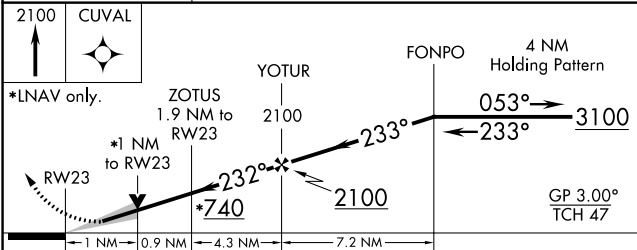
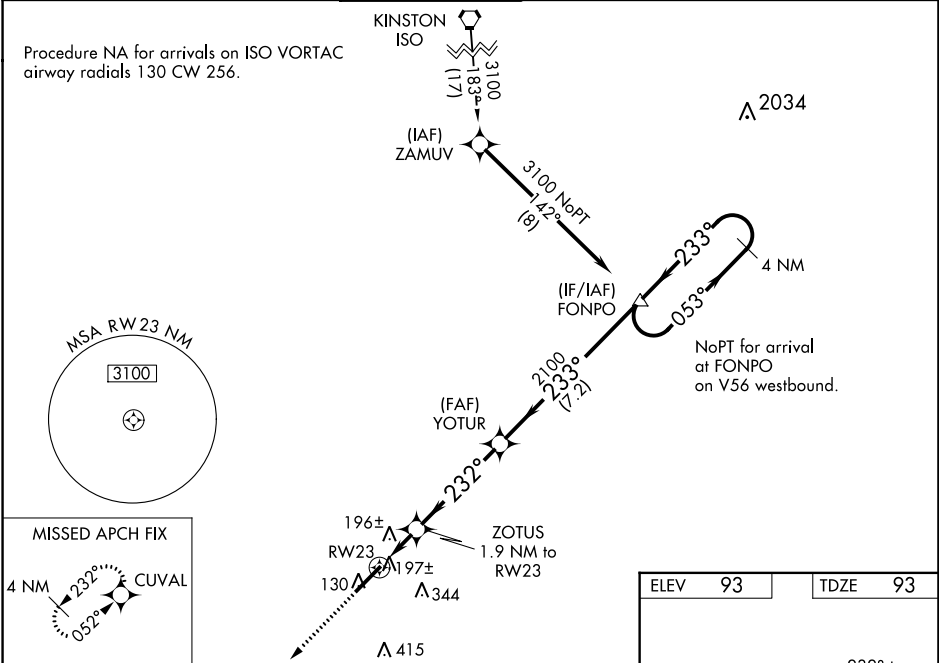
# RNAV (GPS) RWY 23

ALBERT J ELLIS (O.A.J)

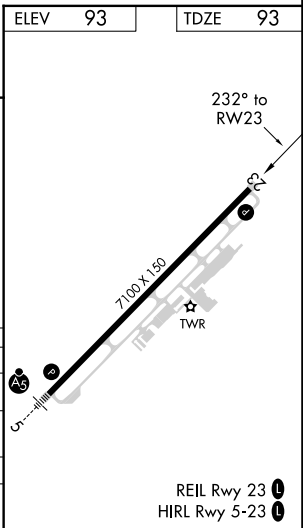
**⚠** Baro-VNAV NA when using Wilmington altimeter setting. For uncompensated Baro-VNAV systems, LNAV/VNAV NA below -1.5°C (5°F) or above 43°C (109°F). DME/DME RNP-0.3 NA. VDP NA with Wilmington altimeter setting. When local altimeter setting not received, use Wilmington altimeter setting and increase LPV DA to 387 feet and all visibilities 3/8 SM. Increase LNAV/VNAV DA to 591 feet; increase all MDAs 100 feet and LNAV visibility Cat C/D 3/8 SM, and Circling visibility Cat C/D 1/4 SM.

**MISSED APPROACH:**  
Climb to 2100 direct  
CUVAL and hold.

ATIS <b>124.475</b>	WILMINGTON APP CON ★ <b>135.75 317.425</b>	ELLIS TOWER ★ <b>132.65 (CTAF)</b> <b>0</b>	GND CON <b>125.4</b>	CLNC DEL <b>121.4 257.6</b> (when twr closed)	UNICOM <b>122.95</b>
------------------------	---	--	-------------------------	---	-------------------------



CATEGORY	A	B	C	D
LPV DA		293-3/4	200 (200-3/4)	
LNAV/ VNAV DA		497-13/8	404 (500-13/8)	
LNAV MDA		460-1	367 (400-1)	
CIRCLING	540-1 447 (500-1)	560-1 467 (500-1)	720-13/4 627 (700-13/4)	720-2 627 (700-2)



SE-2, 11 JUL 2024 to 08 AUG 2024

SE-2, 11 JUL 2024 to 08 AUG 2024