

WAAS CH <b>82002</b> <b>W04A</b>	APP CRS <b>047°</b>	Rwy Idg TDZE <b>1642</b> Apt Elev <b>1642</b>
--	------------------------	---

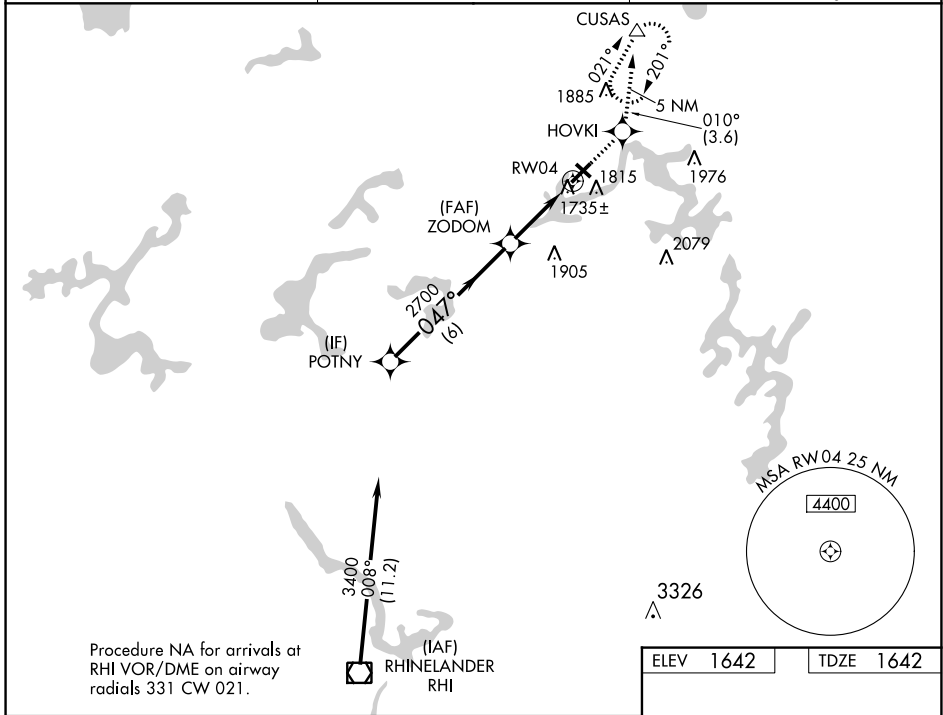
# RNAV (GPS) RWY 4

EAGLE RIVER UNION (EGV)

**⚠** Baro-VNAV NA when using Minocqua-Woodruff altimeter setting. For uncompensated Baro-VNAV systems, LNAV/VNAV NA below -18° C (0° F) or above 44° C (112° F).  
**⚠** DME/DME RNP-0.3 NA. Visibility reduction by helicopters NA. When local altimeter setting not received, use Minocqua-Woodruff altimeter setting and increase LPV DA to 2017, LNAV/VNAV DA to 2052, and all MDAs 60 feet. Increase Circling Cat C/D visibility ¼ SM.

MISSED APPROACH: Climb to 3500 direct HOVKI and on track 010° to CUSAS and hold.

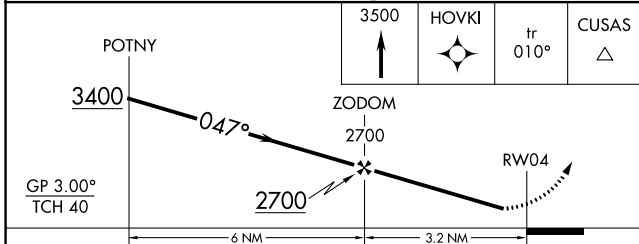
AWOS-3 <b>118.325</b>	MINNEAPOLIS CENTER <b>133.65 281.5</b>	UNICOM <b>122.8 (CTAF) 0</b>
--------------------------	---	---------------------------------



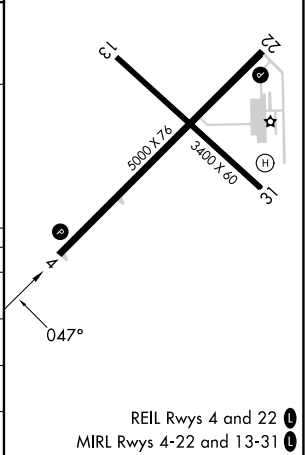
Procedure NA for arrivals at RHI VOR/DME on airway radials 331 CW 021.

(IAF) RHINELANDER RHI

ELEV 1642	TDZE 1642
-----------	-----------



CATEGORY	A	B	C	D
LPV DA	1970-1¼		328 (400-1¼)	
LNAV/VNAV DA	2005-1¼		363 (400-1¼)	
LNAV MDA	2080-1	438 (500-1)	2080-1¼ 438 (500-1¼)	2080-1½ 438 (500-1½)
CIRCLING	2120-1¼	478 (500-1¼)	2260-1¾ 618 (700-1¾)	2340-2¼ 698 (700-2¼)



REIL Rws 4 and 22 0  
MIRL Rws 4-22 and 13-31 0

EC-3, 11 JUL 2024 to 08 AUG 2024

EC-3, 11 JUL 2024 to 08 AUG 2024