

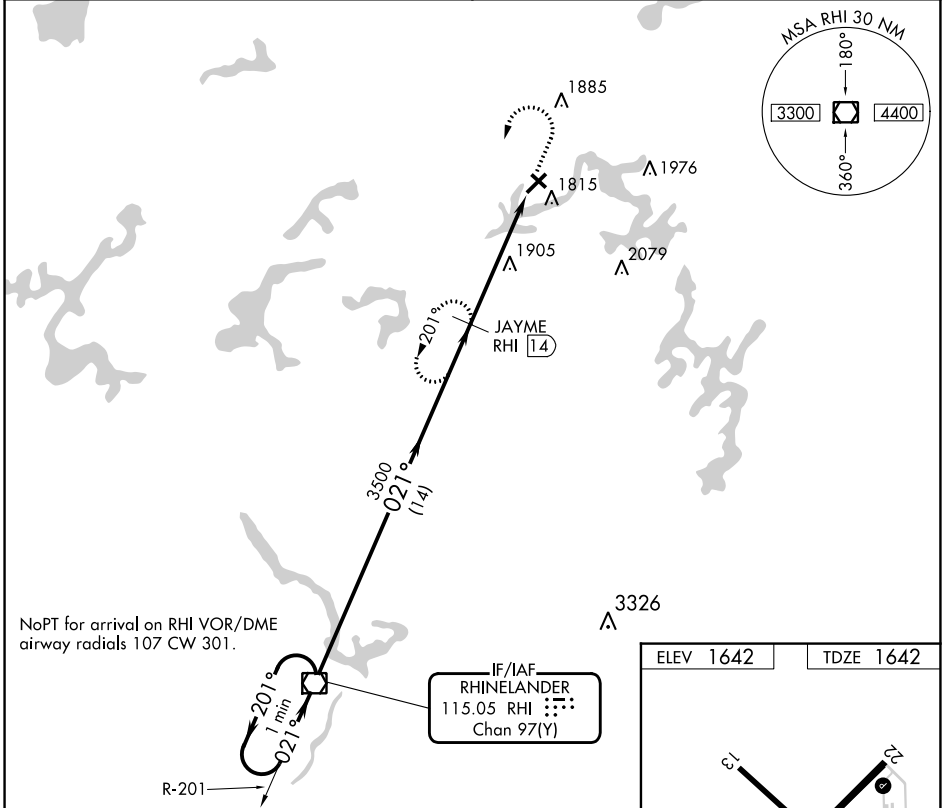
| | | | |
|-------------|---------|----------|------|
| VOR/DME RHI | APP CRS | Rwy Idg | 5000 |
| 115.05 | 021° | TDZE | 1642 |
| Chan 97(Y) | | Apt Elev | 1642 |

VOR/DME RWY 4

EAGLE RIVER UNION (EGV)

⚠ MISSED APPROACH: Climb to 3500 then left turn on RHI VOR/DME R-021 to JAYME/14 DME and hold.

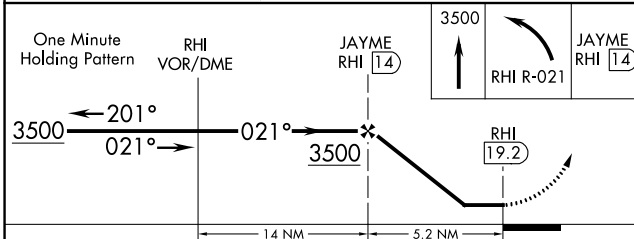
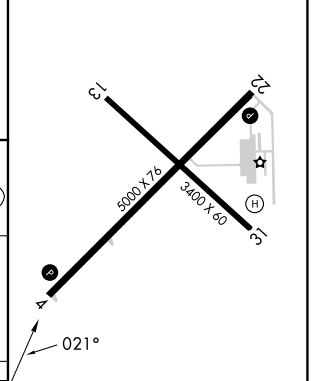
| | | |
|--------------------------|---|--|
| AWOS-3 118.325 | MINNEAPOLIS CENTER 133.65 281.5 | UNICOM 122.8 (CTAF) 📶 |
|--------------------------|---|--|



NoPT for arrival on RHI VOR/DME airway radials 107 CW 301.

IF/IAF
RHINELANDER
115.05 RHI
Chan 97(Y)

| | |
|-----------|-----------|
| ELEV 1642 | TDZE 1642 |
|-----------|-----------|



| CATEGORY | A | B | C | D | E |
|----------|--------|-------------|-------------------------|-------------------------|----|
| S-4 | 2260-1 | 618 (700-1) | 2260-1¾ 618 (700-1¾) | 2260-2 618 (700-2) | NA |
| CIRCLING | 2260-1 | 618 (700-1) | 2260-1¾ 618 (700-1¾) | 2340-2¼ 698 (700-2¼) | NA |

REIL Rwy 4 and 22 **📶**
MIRL Rwy 4-22 and 13-31 **📶**

EC-3, 11 JUL 2024 to 08 AUG 2024

EC-3, 11 JUL 2024 to 08 AUG 2024