

VORTAC LCH <b>113.4</b> Chan <b>81</b>	APP CRS <b>060°</b>	Rwy Idg <b>2700</b> TDZE <b>18</b> Apt Elev <b>18</b>
----------------------------------------------	------------------------	-------------------------------------------------------------

# VOR/DME or GPS RWY 7

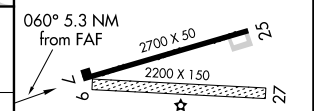
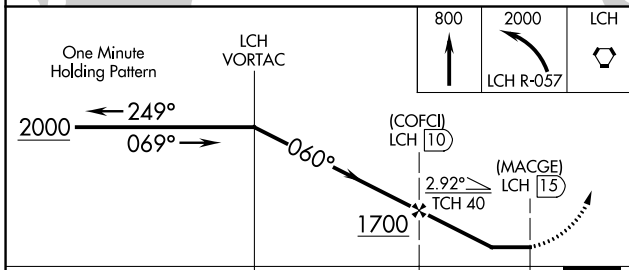
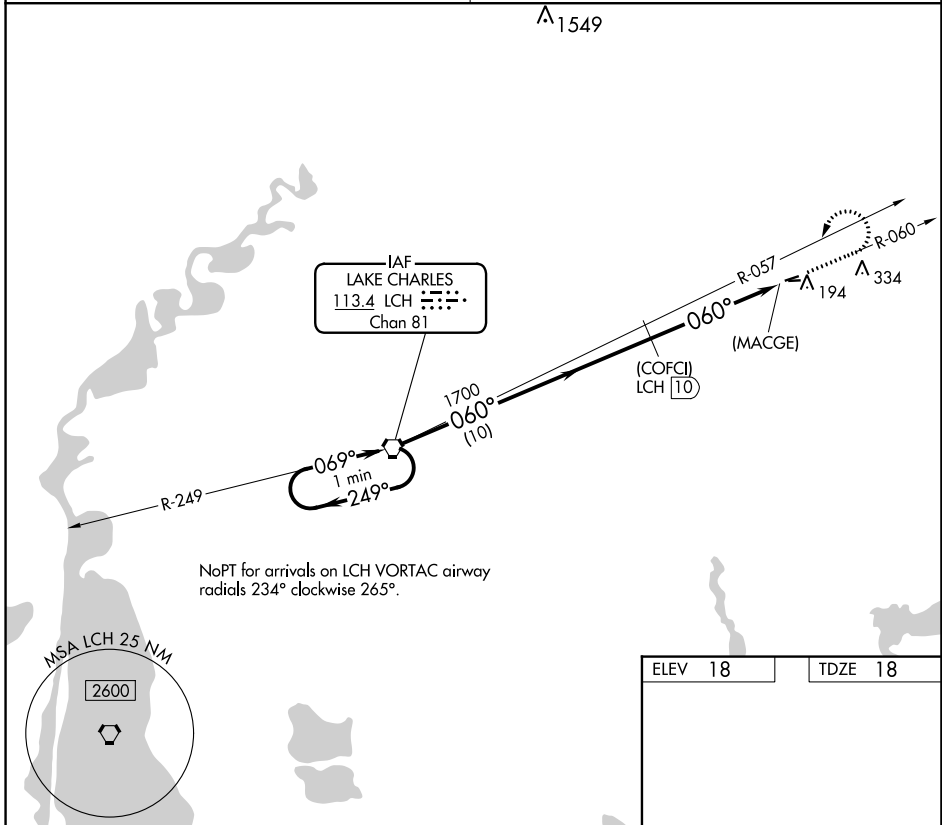
WELSH (6R1)

**▼** Use Lake Charles altimeter setting. Procedure NA at night.  
**▲ NA** Circling NA to Rwys 9 and 27.

MISSED APPROACH: Climb to 800 then climbing left turn to 2000 via LCH R-057 to LCH VORTAC.

LAKE CHARLES APP CON ★ **119.8 282.3**

UNICOM **122.8** (CTAF)



CATEGORY	A	B	C	D
S-7	540-1	522 (600-1)		NA
CIRCLING	600-1	582 (600-1)		NA

ELEV	18	TDZE	18
MIRL Rwy 7-25			

SC-4, 11 JUL 2024 to 08 AUG 2024

SC-4, 11 JUL 2024 to 08 AUG 2024