

| | | |
|--|------------------------|---|
| WAAS CH 97708 W09A | APP CRS 090° | Rwy Idg 4549 TDZE 669 Apt Elev 669 |
|--|------------------------|---|

RNAV (GPS) RWY 9

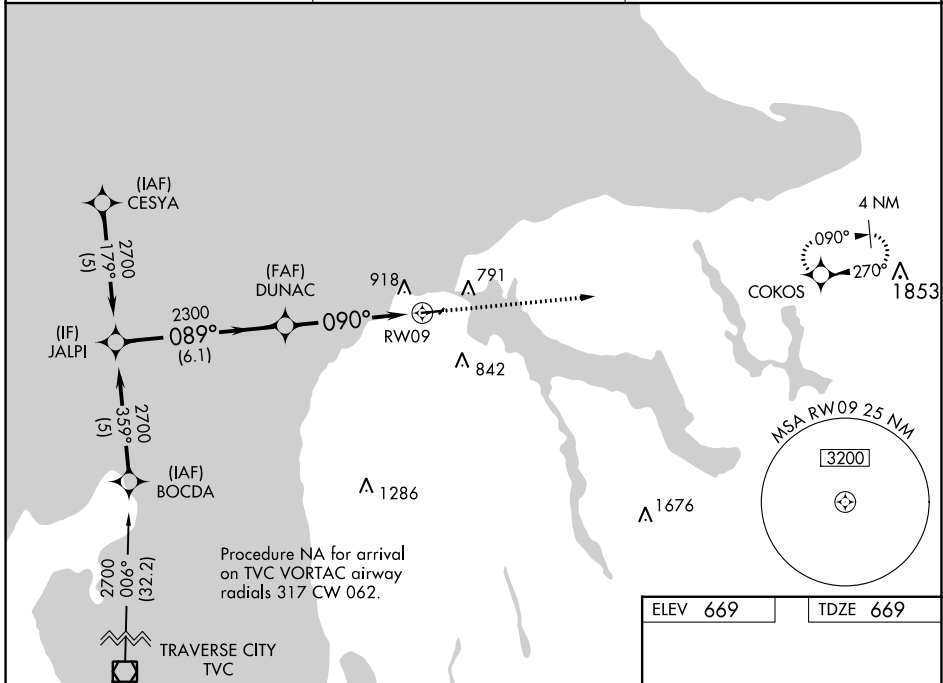
CHARLEVOIX MUNI (CVX)

RNP APCH - GPS.

⚠ Circling NA to Rwy 4 and 22. Baro-VNAV NA when using Pellston altimeter setting. For uncompensated Baro-VNAV systems, LNAV/VNAV NA below -16°C or above 54°C. When local altimeter setting not received, use Pellston altimeter setting; increase LPV DA to 986 feet and all visibilities ¼ SM; increase LNAV/VNAV DA to 1270 feet and all visibilities ¼ SM; increase all MDA 80 feet and visibility Cats C and D ¼ SM.

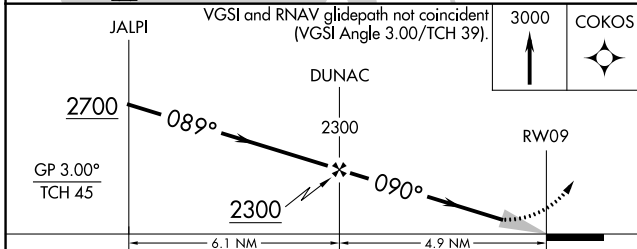
⚠ MISSED APPROACH: Climb to 3000 direct COKOS and hold.

| | | |
|-------------------------|---|--|
| AWOS-3P 120.0 | MINNEAPOLIS CENTER 134.6 354.05 | UNICOM 122.8 (CTAF) 📶 |
|-------------------------|---|--|



EC-1, 11 JUL 2024 to 08 AUG 2024

EC-1, 11 JUL 2024 to 08 AUG 2024



| | |
|----------|----------|
| ELEV 669 | TDZE 669 |
|----------|----------|

| CATEGORY | A | B | C | D |
|--------------|----------------------|---|----------------------|---|
| LPV DA | 919-¾ 250 (300-¾) | | | |
| LNAV/VNAV DA | 1203-1½ 534 (600-1½) | | | |
| LNAV MDA | 1160-1 491 (500-1) | | 1160-1⅓ 491 (500-1⅓) | |
| CIRCLING | 1280-1 611 (700-1) | | 1280-1¾ 691 (700-1¾) | |

