

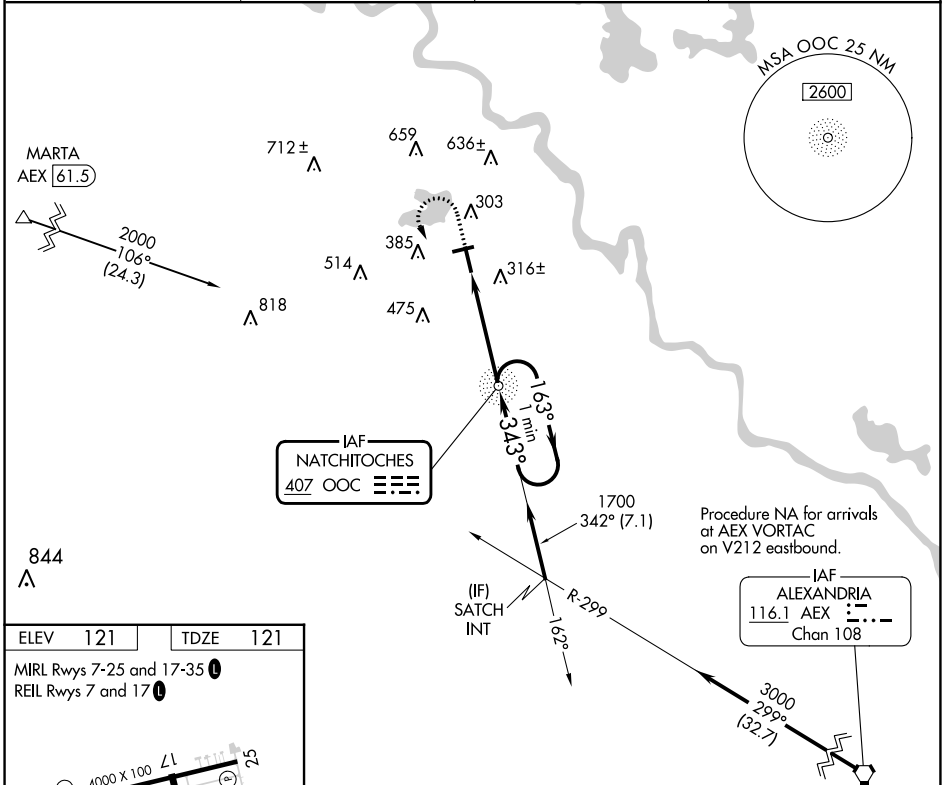
NDB OOC 407	APP CRS 343°	Rwy Idg TDZE Apt Elev	5003 121 121
-----------------------	------------------------	-----------------------------	---

NDB RWY 35
NATCHITOCHE RGNL (I.E.R)

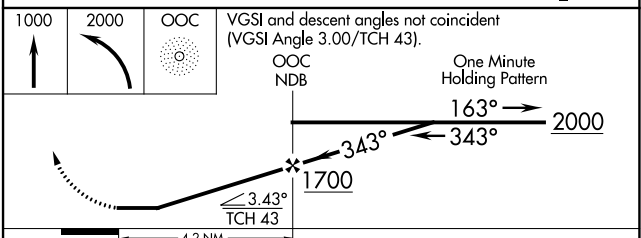
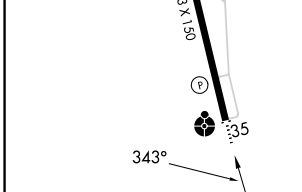
NA Helicopter visibility reduction below 3/4 SM NA. When local altimeter setting not received, use Alexandria Intl altimeter setting: Increase all MDA 100 feet and S-35 Cat C visibility 1/8 SM and Circling Cat C visibility 1/2 SM. For inoperative ODALS increase S-35 Cat C visibility 1/8 mile. Inoperative table does not apply to S-35 Cat A/B.

ODALS MISSED APPROACH: Climb to 1000 then climbing left turn to 2000 direct OOC NDB and hold.

AWOS-3 119,025	POLK APP CON 125.4 302.2	GCO 135,075	UNICOM 122.8(CTAF)
--------------------------	------------------------------------	-----------------------	------------------------------



ELEV 121	TDZE 121
MIRL Rwy 7-25 and 17-35	REIL Rwy 7 and 17



	A	B	C	D
S-35	720-1	599 (600-1)	720-1 5/8 599 (600-1 5/8)	NA
CIRCLING	720-1 599 (600-1)	740-1 619 (700-1)	860-2 739 (800-2)	NA

SC-4, 11 JUL 2024 to 08 AUG 2024

SC-4, 11 JUL 2024 to 08 AUG 2024