

WAAS CH 77810 W17A	APP CRS 162°	Rwy Ldg 5003 TDZE 117 Apt Elev 121
--	------------------------	---

RNAV (GPS) RWY 17

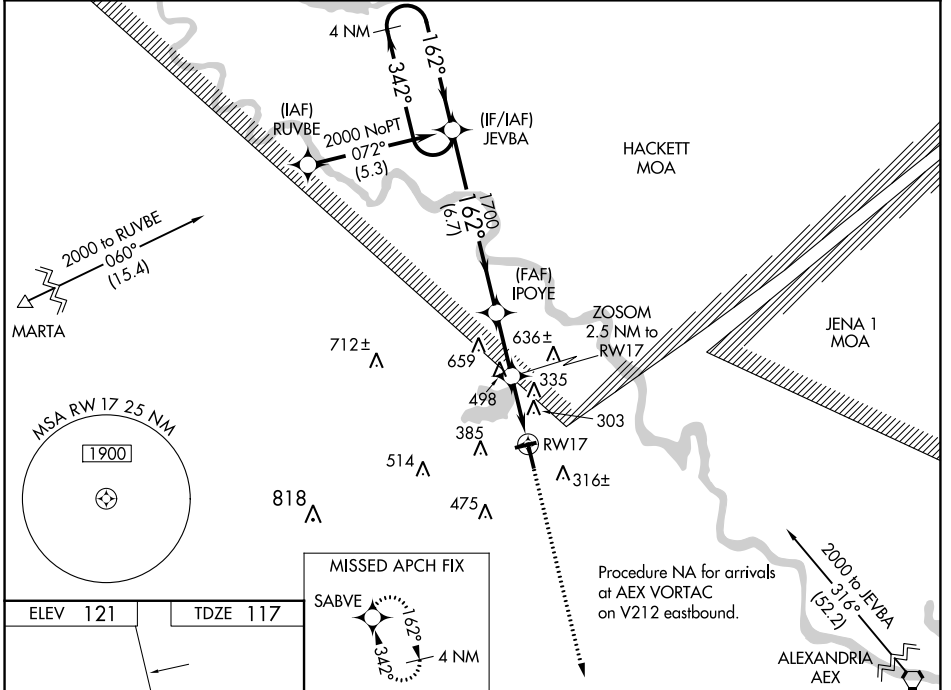
NATCHITOCHES RGNL (IER)

RNP APCH.

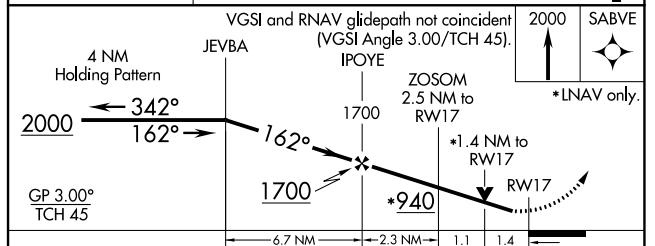
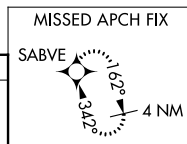
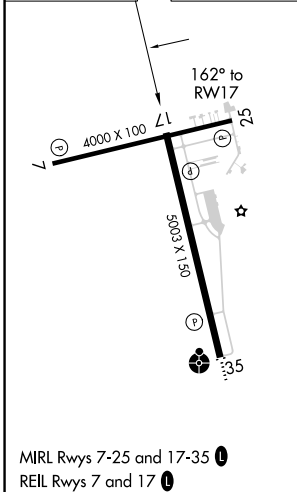
▼ For uncompensated Baro-VNAV systems, LNAV/VNAV NA below -15°C or above 54°C.
 ▲ Visibility reduction by helicopters NA. When local altimeter setting not received, use Alexandria Intl altimeter setting: Increase LPV DA to 458 feet and visibility all Cats ½ SM; increase LNAV/VNAV DA to 749 feet and visibility all Cats ¾ SM; increase all MDA 100 feet and LNAV Cat C visibility ¾ SM and Circling Cat C visibility ½ SM. Baro-VNAV and VDP NA when using Alexandria Intl altimeter setting.

MISSED APPROACH: Climb to 2000 direct SABVE and hold.

AWOS-3 119,025	POLK APP CON 125.4 302.2	GCO 135,075	UNICOM 122.8 (CTAF) 0
--------------------------	------------------------------------	-----------------------	---------------------------------



ELEV 121	TDZE 117
-----------------	-----------------



CATEGORY	A	B	C	D
LPV DA	367-¾	250 (300-¾)		NA
LNAV/VNAV DA	658-1 ⅞	541 (600-1 ⅞)		NA
LNAV MDA	620-1	503 (500-1)	620-1 ⅜ 503 (500-1 ⅜)	NA
CIRCLING	800-1	679 (700-1)	860-2 739 (800-2)	NA

SC-4, 11 JUL 2024 to 08 AUG 2024

SC-4, 11 JUL 2024 to 08 AUG 2024