

WAAS CH 58322 W18A	APP CRS 178°	Rwy ldg TDZE Apt Elev	5005 140 140
--	------------------------	-----------------------------	---

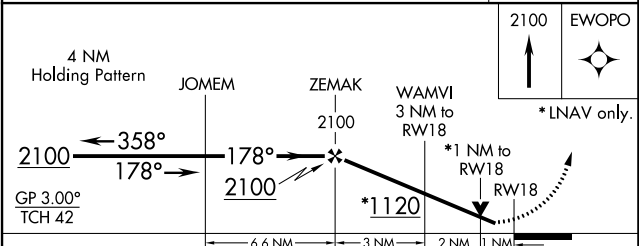
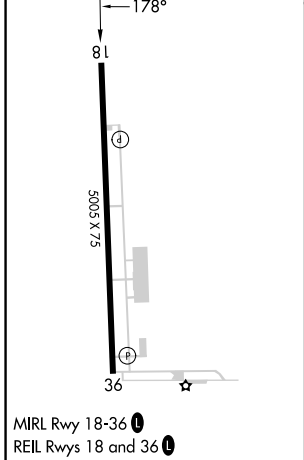
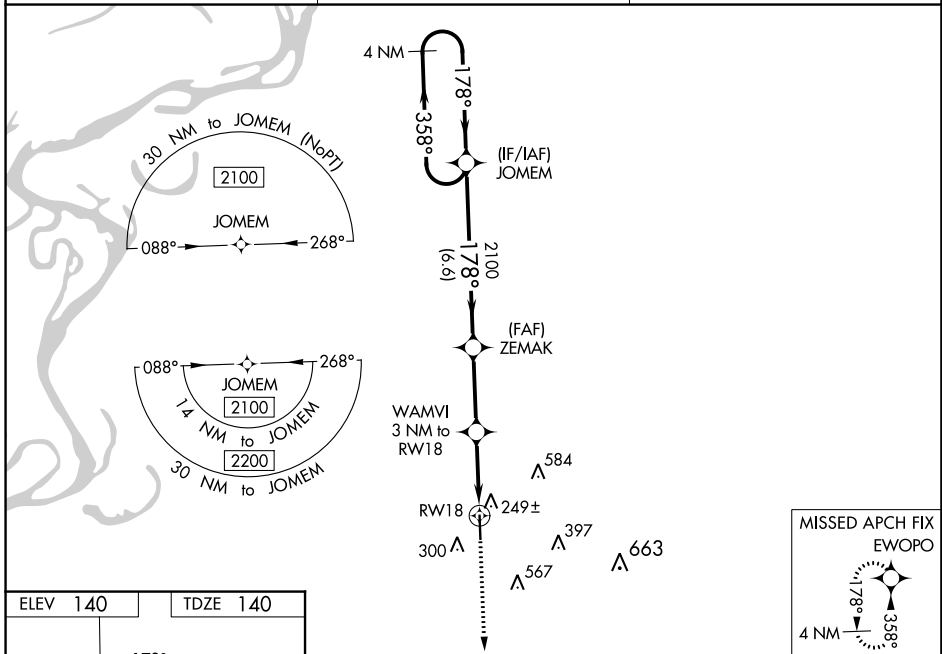
RNAV (GPS) RWY 18

CLEVELAND MUNI (RNV)

⚠ For uncompensated Baro-VNAV systems, LNAV/VNAV NA below -1.5°C (5°F) or above 54°C (130°F). DME/DME RNP-0.3 NA. When local altimeter setting not received, use Greenville altimeter setting and increase LPV DA to 438, LNAV/VNAV DA to 597, and all MDA 60 feet; increase LPV all Cats and LNAV Cats C/D visibility 1/8 mile, increase LNAV/VNAV all Cats visibility 1/4 mile. Baro-VNAV and VDP NA when using Greenville altimeter setting. Rwy 18 helicopter visibility reduction below 3/4 SM NA.

⚠ MISSED APPROACH: Climb to 2100 direct EWOP and hold.

AWOS-3PT 124.175	MEMPHIS CENTER 135.875 269.35	UNICOM 122.725 (CTAF) 0
----------------------------	---	-----------------------------------



CATEGORY	A	B	C	D
LPV DA		390-7/8	250 (300-7/8)	
LNAV/VNAV DA		549-13/8	409 (500-13/8)	
LNAV MDA		500-1	360 (400-1)	
C CIRCLING	600-1	460 (500-1)	900-2 1/4 760 (800-2 1/4)	900-2 1/2 760 (800-2 1/2)

SC-4, 11 JUL 2024 to 08 AUG 2024

SC-4, 11 JUL 2024 to 08 AUG 2024