

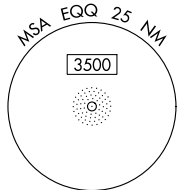
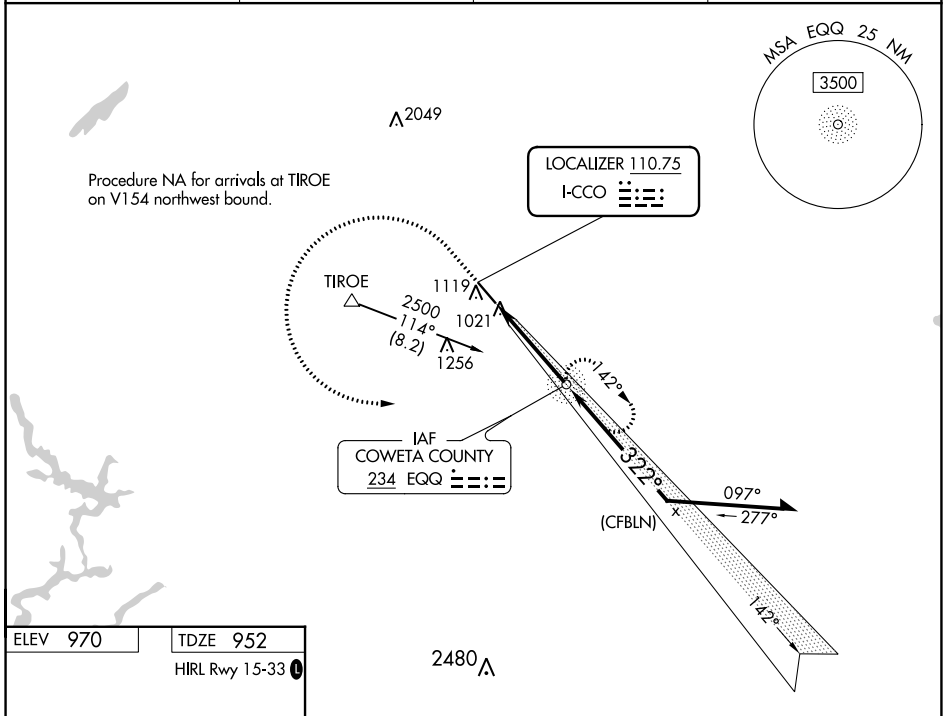
LOC I-CCO <b>110.75</b>	APP CRS <b>322°</b>	Rwy Idg TDZE Apt Elev	<b>5500</b> <b>952</b> <b>970</b>
----------------------------	------------------------	-----------------------------	---

# ILS or LOC RWY 33

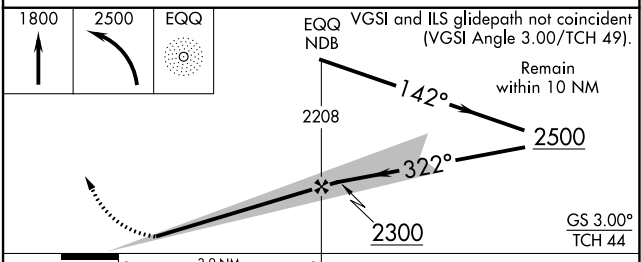
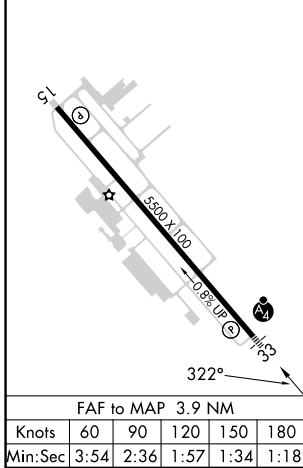
NEWNAN COWETA COUNTY (CCO)

ADF required.	MALSF	MISSED APPROACH: Climb to 1800 then climbing left turn to 2500 direct EQQ NDB and hold, continue climb-in-hold to 2500.
Rwy 33 helicopter visibility reduction below 3/4 SM NA. Inop table does not apply to S-ILS 33.		

AWOS-3PT <b>118.975</b>	ATLANTA APP CON <b>119.8 354.125</b>	GCO <b>121.725</b>	UNICOM <b>122.7 (CTAF)</b>
----------------------------	---	-----------------------	-------------------------------



ELEV 970	TDZE 952
HIRL Rwy 15-33	



CATEGORY	A	B	C	D
S-ILS 33	1 202-3/4 250 (300-3/4)			
S-LOC 33	1 340-3/4	388 (400-3/4)	1 340-7/8	388 (400-7/8)
<input checked="" type="checkbox"/> CIRCLING	1 420-1	450 (500-1)	1 560-1 1/2	1 560-2
			590 (600-1 1/2)	590 (600-2)

SE-4, 11 JUL 2024 to 08 AUG 2024

SE-4, 11 JUL 2024 to 08 AUG 2024