

WAAS CH 90422 W10A	APP CRS 099°	Rwy Idg TDZE 153 Apt Elev 153	3750
--	------------------------	---	-------------

RNAV (GPS) RWY 10

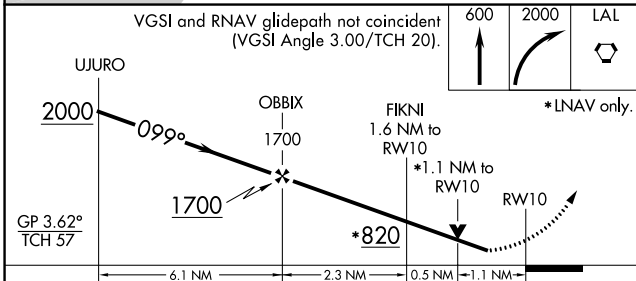
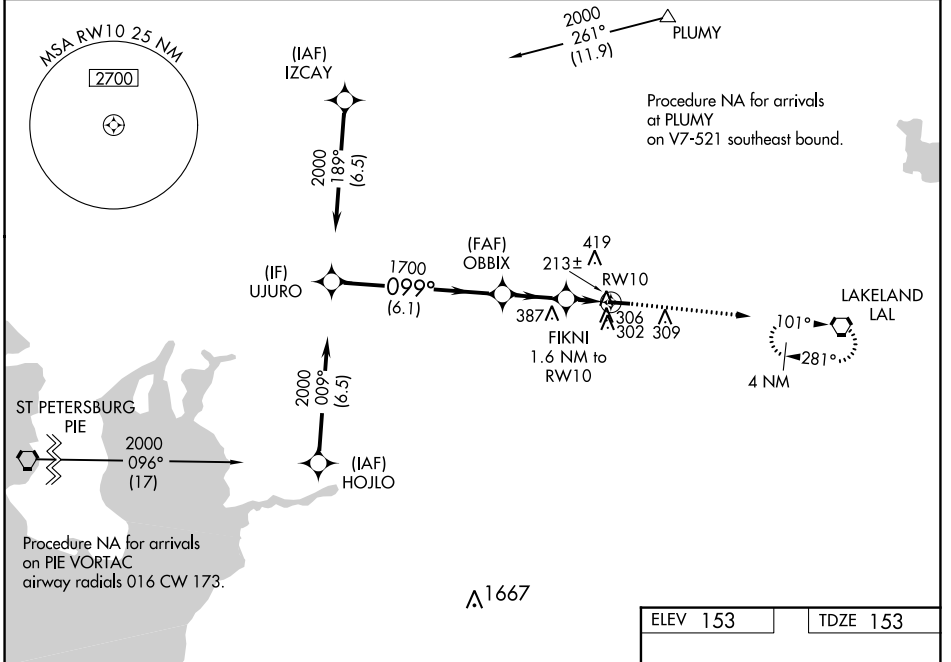
PLANT CITY (PCM)

RNP APCH.

⚠ Circling Rwy 28 NA at night. Baro-VNAV and VDP NA when using Lakeland altimeter setting. Rwy 10 helicopter visibility reduction below $\frac{3}{4}$ SM NA. For uncompensated Baro-VNAV systems, LNAV/VNAV NA below -15°C or above 54°C. When local altimeter setting not received, use Lakeland altimeter setting and increase all DA/MDA 20 feet.

MISSED APPROACH: Climb to 600 then climbing right turn to 2000 direct LAL VORTAC and hold.

AWOS-3 120.025	TAMPA APP CON 120.65 290.3	CLNC DEL 121.725 (GCO)	UNICOM 123.05 (CTAF) 📻
--------------------------	--------------------------------------	----------------------------------	---



ELEV 153	TDZE 153
----------	----------

099°

3950 X 75 0.3% UP

28

MIRL Rwy 10-28 **📻**

REIL Rwy 10 and 28 **📻**

CATEGORY	A	B	C	D
LPV DA	455-1	302 (400-1)		NA
LNAV/VNAV DA	510-1	357 (400-1)		NA
LNAV MDA	520-1	367 (400-1)		NA
📻 CIRCLING	680-1 527 (600-1)	720-1 567 (600-1)		NA

SE-3, 11 JUL 2024 to 08 AUG 2024

SE-3, 11 JUL 2024 to 08 AUG 2024