

VENICE, FLORIDA

AL-5960 (FAA)

23166

WAAS CH 53433 W23A	APP CRS 230°	Rwy Idg 4377 TDZE 18 Apt Elev 18
--	------------------------	---

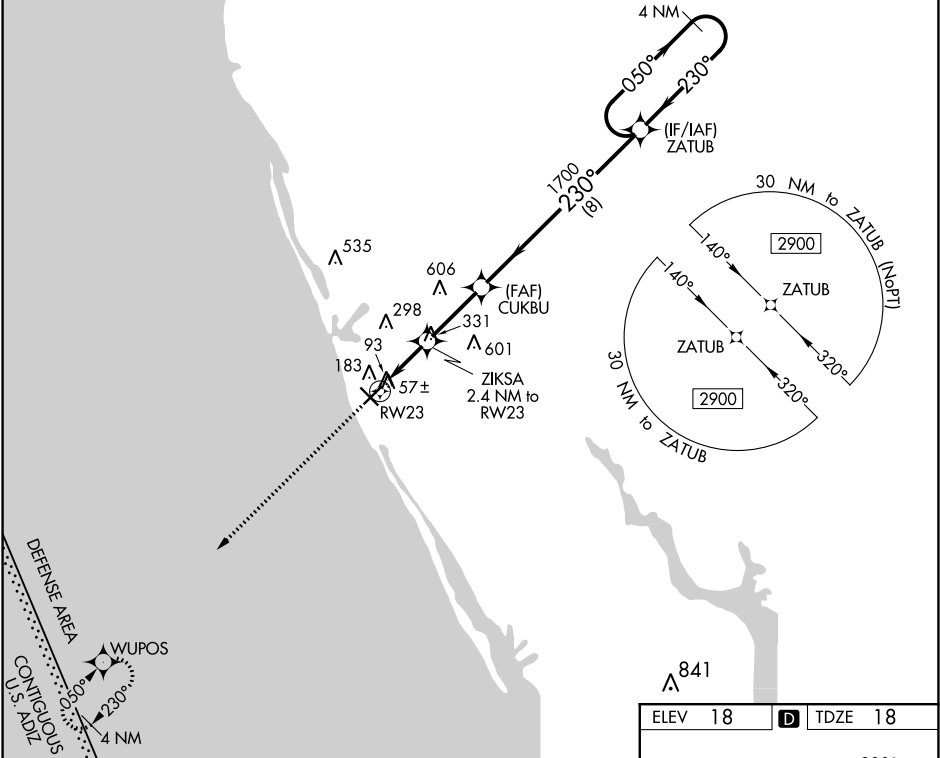
RNAV (GPS) RWY 23

VENICE MUNI (VNC)

⚠ When local altimeter setting not received, use Sarasota altimeter setting and increase all MDA 60 feet and increase LP and LNAV Cats C, D visibility $\frac{1}{8}$ mile, and Circling Cat C visibility $\frac{1}{4}$ mile. DME/DME RNP-0.3 NA. VDP NA with Sarasota altimeter setting. Helicopter visibility reduction below $\frac{3}{4}$ SM NA.

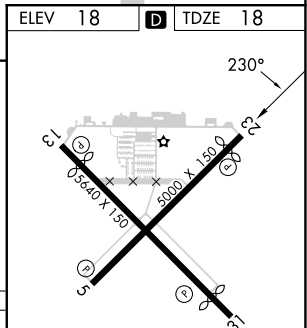
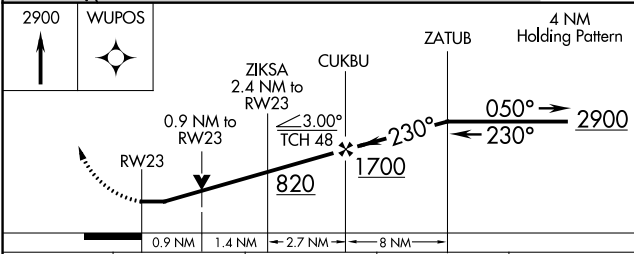
MISSED APPROACH:
Climb to 2900 direct
WUPOS and hold.

AWOS-3 119.275	TAMPA APP CON 119.65 353.575	CLNC DEL 118.075	UNICOM 122.725 (CTAF) 1
--------------------------	--	----------------------------	-----------------------------------



SE-3, 11 JUL 2024 to 08 AUG 2024

SE-3, 11 JUL 2024 to 08 AUG 2024



CATEGORY	A	B	C	D
LP MDA	360-1 342 (400-1)			
LNAV MDA	440-1	422 (500-1)	440-1 $\frac{1}{4}$	422 (500-1 $\frac{1}{4}$)
C CIRCLING	500-1	482 (500-1)	700-2 682 (700-2)	920-3 902 (1000-3)

MIRL Rwy 5-23 and 13-31 **1**
REIL Rwy 5, 13 and 23 **1**
REIL Rwy 31

VENICE, FLORIDA
Orig-B 16OCT14

27°04'N-82°26'W

RNAV (GPS) RWY 23

VENICE MUNI (VNC)