

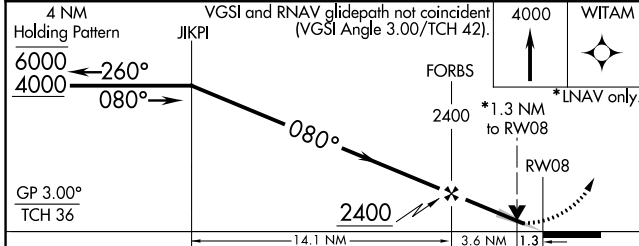
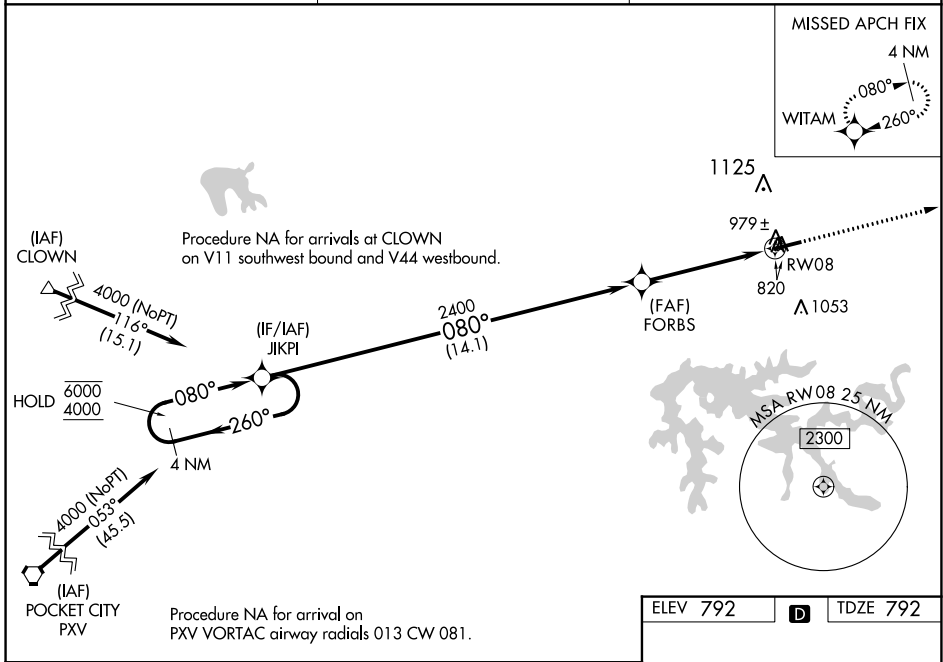
WAAS CH <b>61320</b> <b>W08A</b>	APP CRS <b>080°</b>	Rwy ldg <b>5309</b> TDZE <b>792</b> Apt Elev <b>792</b>
--	------------------------	---

# RNAV (GPS) RWY 8

FRENCH LICK MUNI (F.R.H)

RNP APCH.	MISSED APPROACH: Climb to 4000 direct WITAM and hold.
<p>▼</p> <p>▲ For uncompensated Baro-VNAV systems, LNAV/VNAV NA below -16°C or above 39°C.</p>	

AWOS-3 <b>118.075</b>	LOUISVILLE APP CON <b>132.075 327.0</b>	UNICOM <b>122.8 (CTAF)</b>
--------------------------	--	-------------------------------



CATEGORY	A	B	C	D
LPV DA		1057-7/8	265 (300-7/8)	
LNAV/VNAV DA		1162-1 1/4	370 (400-1 1/4)	
LNAV MDA	1240-1	448 (500-1)	1240-1 3/8	448 (500-1 3/8)
CIRCLING	1280-1	488 (500-1)	1480-2 688 (700-2)	1480-2 1/4 688 (700-2 1/4)

ELEV 792 **D** TDZE 792

5500 X 100

080° to RW08

MIRL Rwy 8-26  
REIL Rwy 8 and 26

EC-2, 11 JUL 2024 to 08 AUG 2024

EC-2, 11 JUL 2024 to 08 AUG 2024