

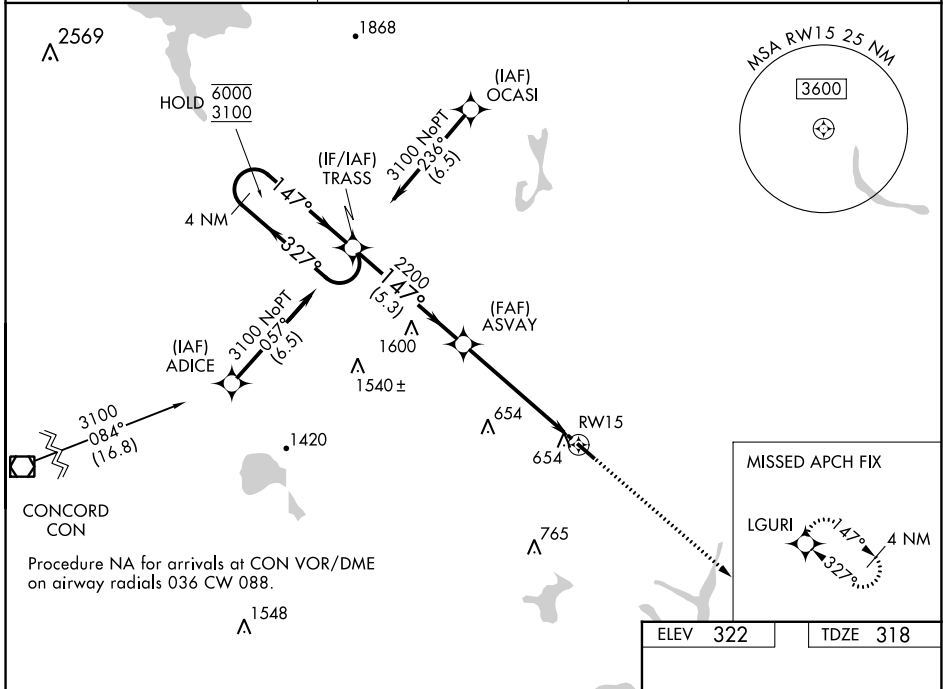
WAAS CH <b>87044</b> <b>W15A</b>	APP CRS <b>147°</b>	Rwy Idg TDZE Apt Elev	<b>4201</b> <b>318</b> <b>322</b>
----------------------------------------	------------------------	-----------------------------	-----------------------------------------

# RNAV (GPS) RWY 15

SKYHAVEN (DAW)

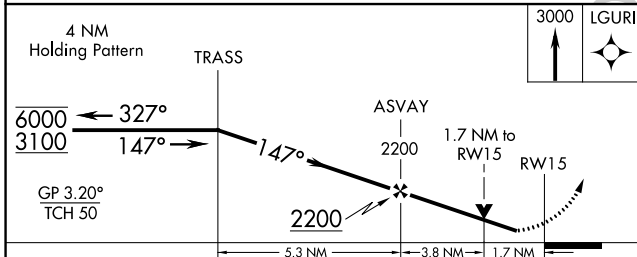
RNP APCH - GPS.	MISSED APPROACH: Climb to 3000 direct LGURI and hold, continue climb-in-hold to 3000.
<p>▼ Rwy 15 helicopter visibility reduction below 3/4 SM NA.</p> <p>▲ For uncompensated Baro-VNAV systems, LNAV/VNAV NA below -20°C or above 54°C.</p>	

ASOS <b>135,275</b>	BOSTON APP CON <b>125,05 269.4</b>	UNICOM <b>122.7 (CTAF) 0</b>
------------------------	---------------------------------------	---------------------------------

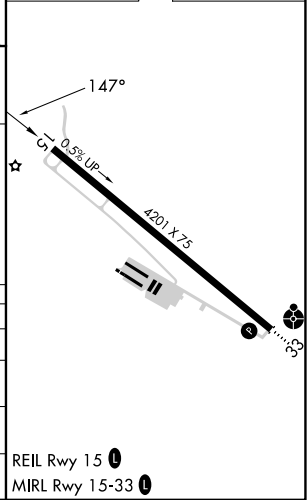


NE-1, 11 JUL 2024 to 08 AUG 2024

NE-1, 11 JUL 2024 to 08 AUG 2024



ELEV 322	TDZE 318
----------	----------



CATEGORY	A	B	C	D
LPV DA	620-7/8	302 (300-7/8)		NA
LNAV/VNAV DA	804-13/8	486 (500-13/8)		NA
LNAV MDA	920-1	602 (600-1)	920-13/4 602 (600-13/4)	NA
CIRCLING	960-1	638 (700-1)	960-13/4 638 (700-13/4)	NA

REIL Rwy 15 0  
MIRL Rwy 15-33 0