

WAAS CH 86444 W06A	APP CRS 059°	Rwy Idg TDZE Apt Elev	5001 819 819
--	------------------------	-----------------------------	---

RNAV (GPS) RWY 6

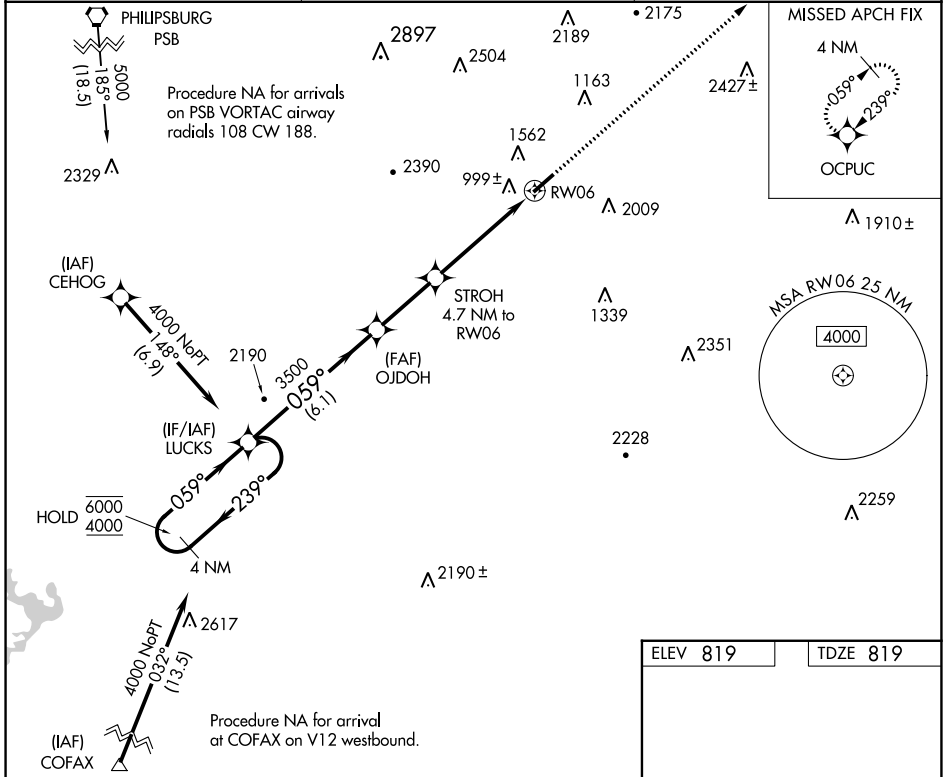
MIFFLIN COUNTY (R.V.L.)

RNP APCH - GPS.

▼
▲ Rwy 6 helicopter visibility reduction below 3/4 SM NA. Baro-VNAV NA.

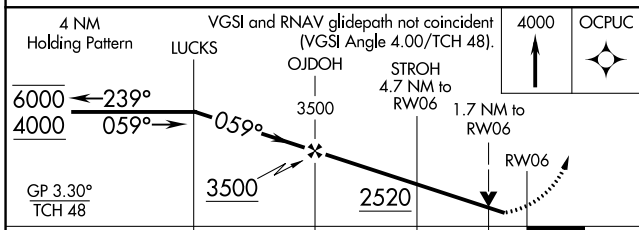
MISSED APPROACH:
Climb to 4000 direct
OCPUC and hold.

AWOS-3PT 123.85	NEW YORK CENTER 134.8 338.3	UNICOM 122.7 (CTAF)
---------------------------	---------------------------------------	-------------------------------

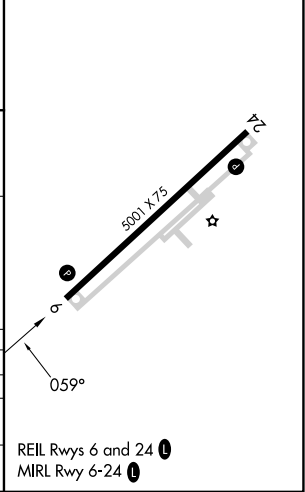


NE-4, 11 JUL 2024 to 08 AUG 2024

NE-4, 11 JUL 2024 to 08 AUG 2024



ELEV 819	TDZE 819
----------	----------



CATEGORY	A	B	C	D
LPV DA		1314-1 3/8	495 (500-1 3/8)	
LNAV/DA VNAV		1506-2	687 (700-2)	
LNAV MDA	1580-1 761 (800-1)	1580-1 1/4 761 (800-1 1/4)	1580-2 1/2	761 (800-2 1/2)