

APP CRS <b>237°</b>	Rwy Idg <b>4100</b>
	TDZE <b>835</b>
	Apt Elev <b>835</b>

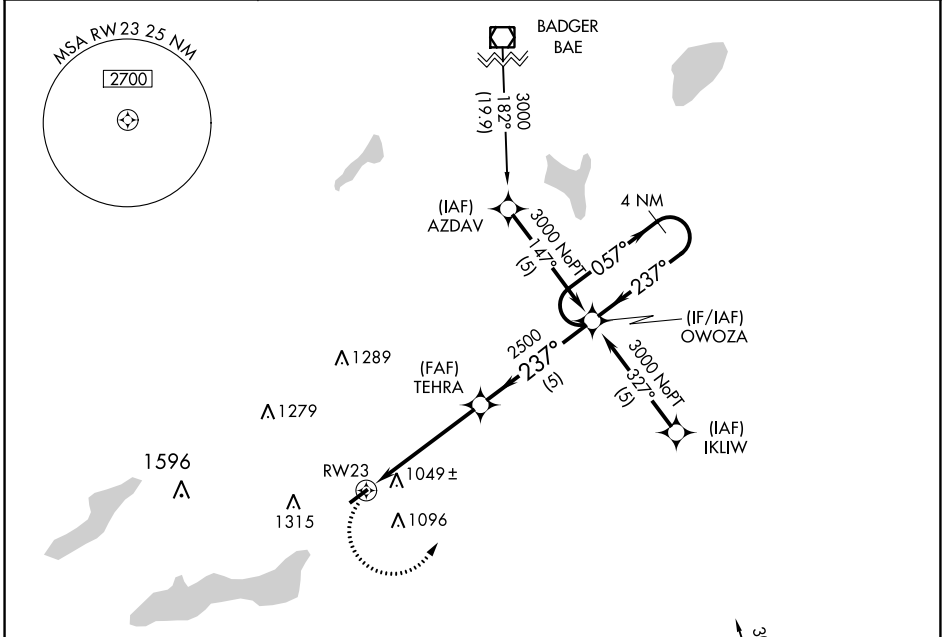
# RNAV (GPS) RWY 23

GRAND GENEVA RESORT (C02)

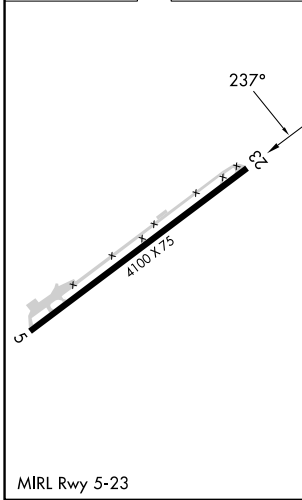
**NA** DME/DME RNP-0.3 NA. Procedure NA at night. Rwy 23 helicopter visibility reduction below 1 SM NA. Use Kenosha altimeter setting.

MISSED APPROACH: Climbing left turn to 3000 direct OWOZA and hold.

ENW ASOS <b>127.175</b>	MILWAUKEE APP CON <b>135.875</b>	UNICOM <b>122.8</b> (CTAF)
----------------------------	-------------------------------------	-------------------------------



ELEV 835	TDZE 835
----------	----------



3000	OWOZA	Visual Segment - Obstacles.	4 NM Holding Pattern	
CATEGORY	A	B	C	D
LNAV MDA	1360-1	525 (600-1)	1360-1½ 525 (600-1½)	NA
CIRCLING	1500-1 665 (700-1)	1520-1 685 (700-1)	1740-2¾ 905 (1000-2¾)	NA

EC-3, 11 JUL 2024 to 08 AUG 2024

EC-3, 11 JUL 2024 to 08 AUG 2024