

APP CRS	Rwy Idg	5000
033°	TDZE	75
	Apt Elev	75

RNAV (GPS) RWY 3

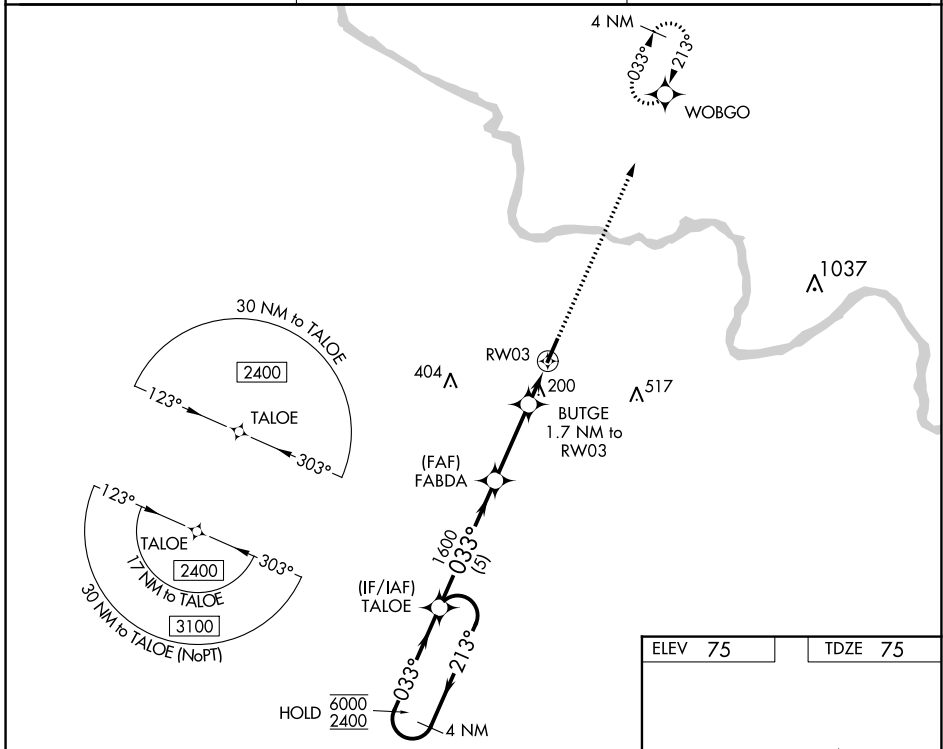
MARTIN COUNTY (MCZ)

RNP APCH - GPS.

▼ Rwy 3 helicopter visibility reduction below 1 SM NA.
 ▲ Straight-in Rwy 3 NA at night, Circling Rwy 3 NA at night.

MISSED APPROACH: Climb to 3500 direct WOBGO and hold, continue climb-in-hold to 3500.

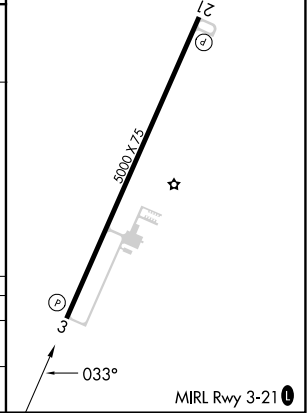
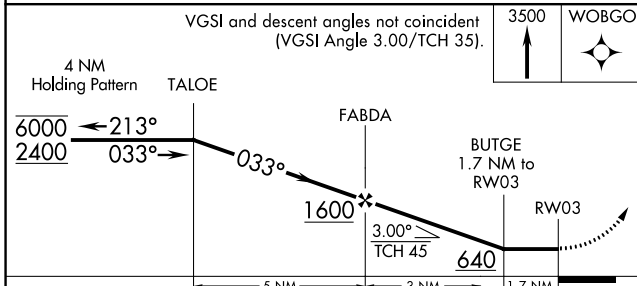
AWOS-3P 118.65	WASHINGTON CENTER 123.85 279.65	UNICOM 122.8 (CTAF) 0
--------------------------	-------------------------------------------	---------------------------------



SE-2, 11 JUL 2024 to 08 AUG 2024

SE-2, 11 JUL 2024 to 08 AUG 2024

ELEV 75	TDZE 75
---------	---------



CATEGORY	A	B	C	D
LNVA MDA	460-1	385 (400-1)	460-1½	385 (400-1½)
C CIRCLING	500-1 425 (500-1)	540-1 465 (500-1)	680-1¾ 605 (700-1¾)	880-2½ 805 (900-2½)