

WAAS CH <b>77929</b> <b>W11A</b>	APP CRS <b>111°</b>	Rwy Idg TDZE Apt Elev	<b>5091</b> <b>1988</b> <b>1989</b>
--	------------------------	-----------------------------	---

# RNAV (GPS) RWY 11

L M CLAYTON (OLF')

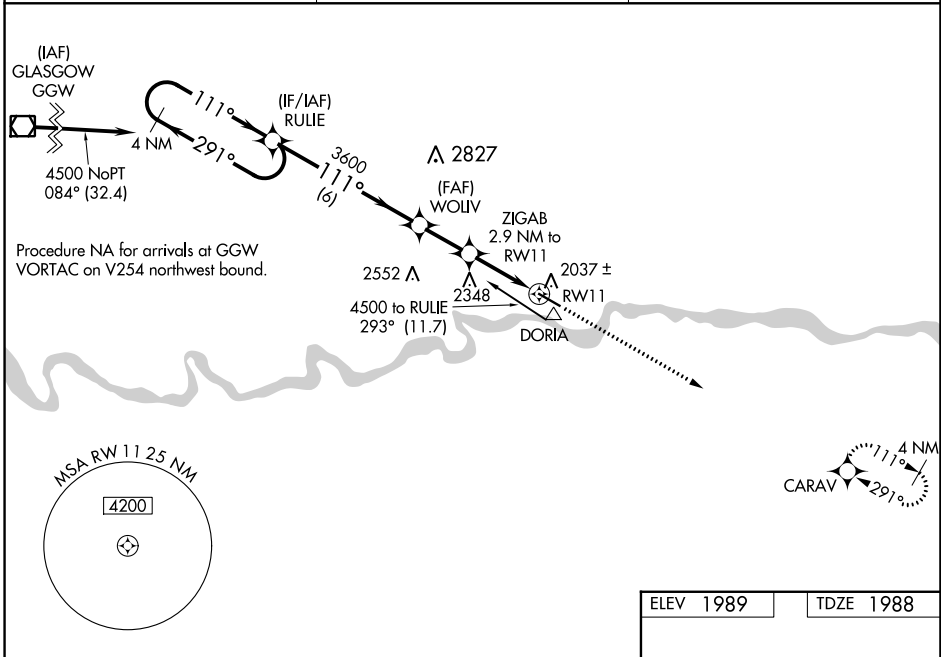
**⚠** For uncompensated Baro-VNAV systems, LNAV/VNAV NA below -18°C (0°F) or above 54°C (130°F). DME/DME RNP-0.3 NA. When local altimeter setting not received, use Wokal FLD/Glasgow-Valley County altimeter setting; increase LPV DA to 2329 ft and visibility 3/8 SM, LNAV/VNAV DA to 2407 ft and visibility 1/2 SM; increase all MDA 160 feet and LNAV and Circling visibility Cat C/D 1/2 SM. Baro-VNAV and VDP NA with Glasgow altimeter setting.

**MISSED APPROACH:**  
Climb to 4800 direct CARAV and hold.

**ASOS**  
**118.325**

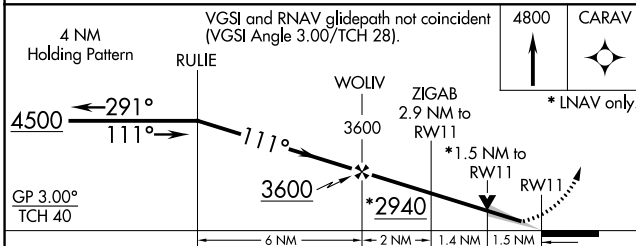
**SALT LAKE CENTER**  
**126.85 305.2**

**UNICOM**  
**122.8 (CTAF) 0**

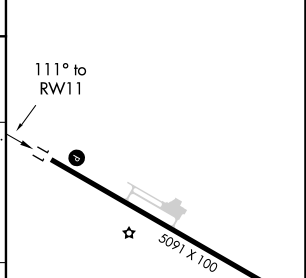


NW-1, 11 JUL 2024 to 08 AUG 2024

NW-1, 11 JUL 2024 to 08 AUG 2024



ELEV 1989	TDZE 1988
-----------	-----------



CATEGORY	A	B	C	D
LPV DA		2188-3/4	200 (200-3/4)	
LNAV/VNAV DA		2266-7/8	278 (300-7/8)	
LNAV MDA	2500-1	512 (600-1)	2500-1 3/8	512 (600-1 3/8)
CIRCLING	2500-1	511 (600-1)	2660-2 671 (700-2)	2780-2 1/2 791 (800-2 1/2)

MIRL Rwy 11-29 0  
REIL Rwy 11-29 0