

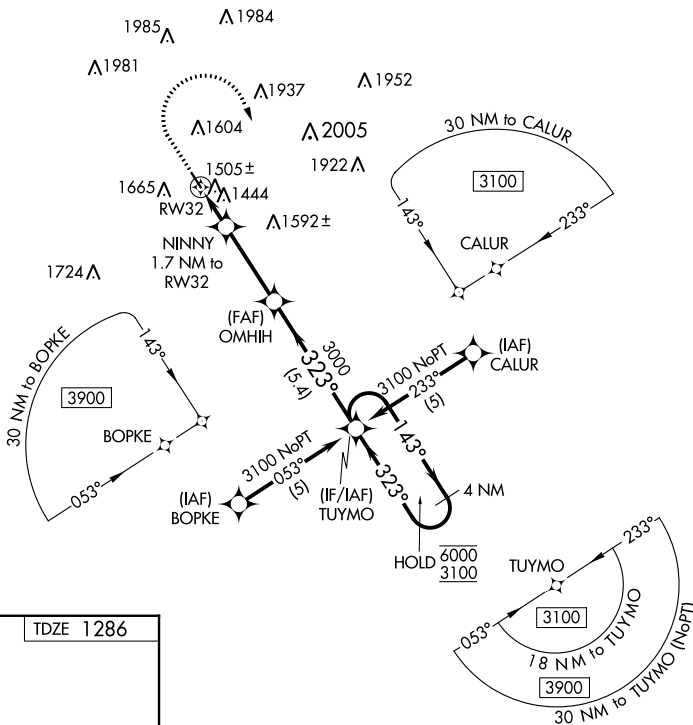
APP CRS	Rwy Idg	3641
323°	TDZE	1286
	Apt Elev	1288

RNAV (GPS) RWY 32

AUDUBON COUNTY (ADU)

RNP APCH - GPS.	<p>▼ When local altimeter setting not received, procedure NA. Rwy 32 helicopter visibility reduction below 3/4 SM NA. Circling Rwy 14 NA at night.</p>	<p>MISSED APPROACH: Climb to 2500 then climbing right turn to 3100 direct TUYMO and hold.</p>
-----------------	--	---

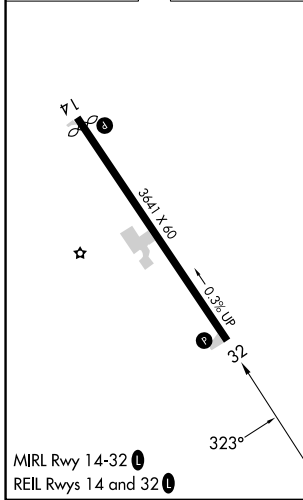
AWOS-3 118.075	MINNEAPOLIS CENTER 119.6 290.4	UNICOM 122.8 (CTAF) ①
--------------------------	--	---------------------------------



NC-3, 11 JUL 2024 to 08 AUG 2024

NC-3, 11 JUL 2024 to 08 AUG 2024

ELEV 1288	TDZE 1286
-----------	-----------



<p>2500 ↑</p> <p>3100 ↷</p> <p>TUYMO ✧</p>	<p>TUYMO ✧</p> <p>4 NM Holding Pattern</p> <p>6000 / 3100</p>			
<p>NINNY 1.7 NM to RWY32</p> <p>3.25° TCH 40</p> <p>1900</p>	<p>OMHIH ✧</p> <p>3000</p> <p>143° → 6000 / 3100</p> <p>← 323°</p>			
<p>1.7 NM</p> <p>3.2 NM</p> <p>5.4 NM</p>				
CATEGORY	A	B	C	D
LNAV MDA	1760-1	474 (500-1)	NA	
CIRCLING	1980-1	692 (700-1)	NA	