


WAAS CH <b>45818</b> <b>W18A</b>	APP CRS <b>180°</b>	Rwy ldg TDZE Apt Elev	<b>5001</b> <b>44</b> <b>46</b>
--	------------------------	-----------------------------	---------------------------------------

# RNAV (GPS) RWY 18

HAMMOND NORTHSHORE RGNL (HDC)

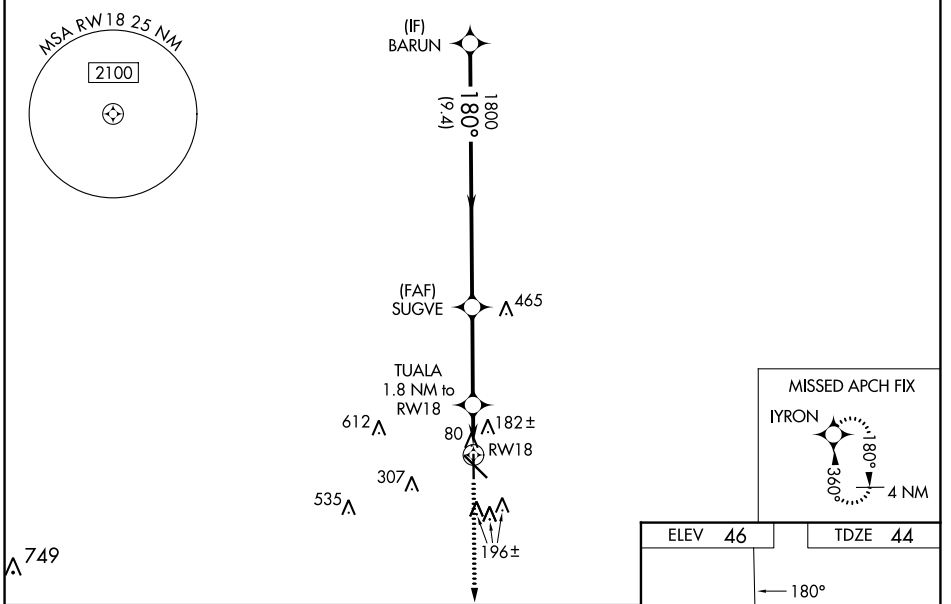
RNP APCH - GPS.

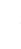

▼ Baro-VNAV and VDP NA when using Louis Armstrong New Orleans Intl altimeter setting. For uncompensated Baro-VNAV systems, LNAV/VNAV NA below -15°C or above 54°C. When local altimeter setting not received, use Louis Armstrong New Orleans Intl altimeter setting and increase LPV DA to 339 feet; increase LNAV/VNAV DA to 555 feet and all visibilities ¼ SM. Increase all MDAs 100 feet and LNAV visibility Cat C/D ½ SM, and Circling visibility Cat C/D ½ SM. For inop ALS when using Louis Armstrong New Orleans Intl altimeter increase LPV all Cats visibility to ¾ SM; LNAV/VNAV all Cats visibility to 1¾ SM and LNAV Cats C/D visibility to 1¾ SM. For inop ALS increase LNAV/VNAV all Cats visibility to 1¼ SM and LNAV Cat C/D visibility to 1¼ SM.

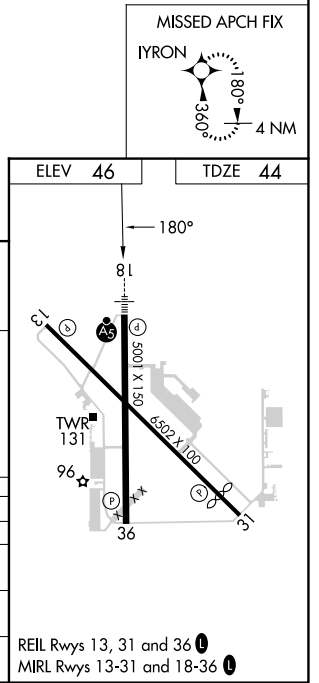
MALSR 

MISSED APPROACH: Climb to 2200 direct IYRON and hold.

ATIS <b>118.325</b>	NEW ORLEANS APP CON <b>119.3 350.35</b>	HAMMOND TOWER ★ <b>120.575</b> (CTAF) 	GND CON <b>119.85</b>	CLNC DEL <b>119.3</b> (When twr closed)
------------------------	--	--	--------------------------	---



BARUN 1800 GP 3.00° TCH 52 SUGVE 1800 TUALA 1.8 NM to RWY 18 660 RWY 18 1.1 NM to RWY 18 9.4 NM 3.5 NM 0.7 NM 1.1 NM	2200 IYRON  	
	CATEGORY A B C D LPV DA 250-½ 206 (300-½) LNAV/VNAV DA 466-¾ 422 (500-¾) LNAV MDA 460-½ 416 (500-½) 460-¾ 416 (500-¾) CIRCLING 500-1 454 (500-1) 620-1½ 920-2¾ 574 (600-1½) 874 (900-2¾)	



SC-4, 11 JUL 2024 to 08 AUG 2024

SC-4, 11 JUL 2024 to 08 AUG 2024