

WAAS CH 40008 W17B	APP CRS 176°	Rwy Idg 8500 TDZE 545 Apt Elev 607
--	------------------------	---

RNAV (GPS) RWY 17L

DALLAS-FORT WORTH INTL (DFW)

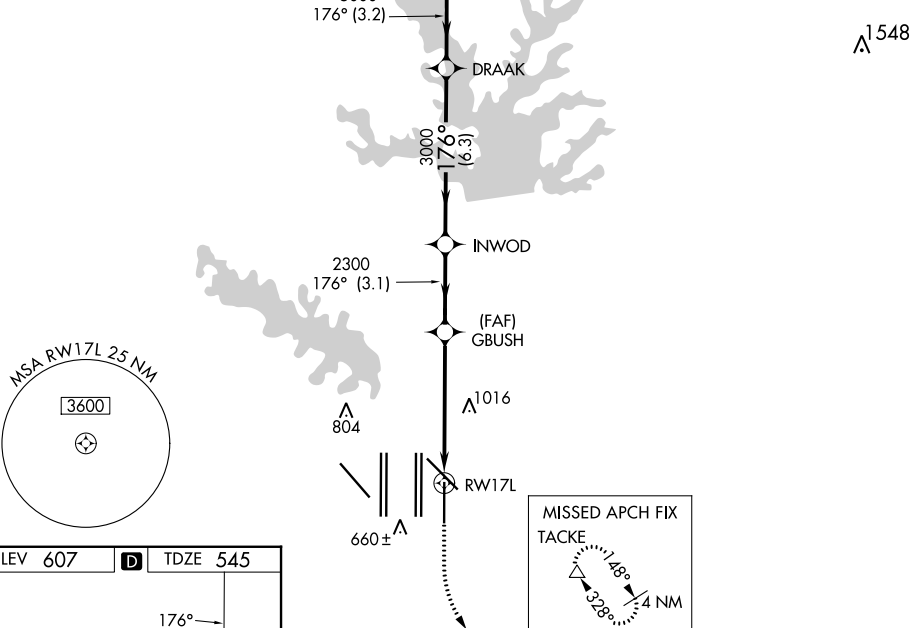
▼ For uncompensated Baro-VNAV systems, LNAV/VNAV NA below -5°C (23°F) or above 54°C (130°F). DME/DME RNP-0.3 NA. Simultaneous approach authorized with Rwy 17C/R and Rwy 18L/R. LNAV procedure NA during simultaneous operations. Use of FD or AP providing RNAV track guidance required during simultaneous operations.



MISSED APPROACH: Climb to 1020 then climbing left turn to 3000 direct TACKE and hold.

D-ATIS ARR 123.775 DEP 135.925	REGIONAL APP CON 119.4	DFW TOWER 126.55 127.5 EAST 124.15 134.9 WEST	GND CON 121.65 121.8 EAST 121.85 WEST	CLNC DEL 128.25	CPDLC
--	----------------------------------	---	---	---------------------------	-------

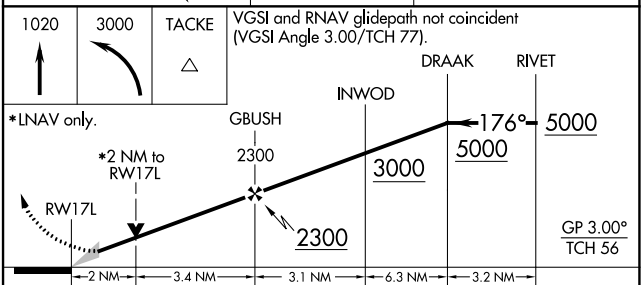
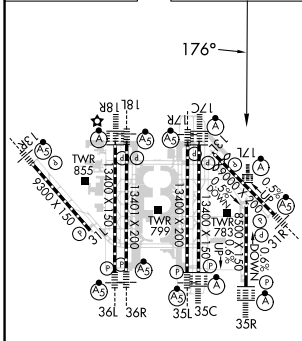
RADAR REQUIRED



SC-2, 11 JUL 2024 to 08 AUG 2024

SC-2, 11 JUL 2024 to 08 AUG 2024

ELEV 607	D	TDZE 545
-----------------	----------	-----------------



CATEGORY	A	B	C	D
LPV DA		745/18	200 (200-½)	
LNAV/VNAV DA		1063/60	518 (500-1¼)	
LNAV MDA	1240/24	695 (700-½)	1240-1½	695 (700-1½)

HIRL all Rwys
REIL Rws 13L and 31L
TDZ/CL all Rws except 13L and 31L