

|  |                        |                             |   |
|--|------------------------|-----------------------------|---|
| WAAS<br>CH <b>58109</b><br><b>W02A</b> | APP CRS<br><b>021°</b> | Rwy Idg<br>TDZE<br>Apt Elev | <b>7026</b><br><b>913</b><br><b>913</b> |
|--|------------------------|-----------------------------|---|

# RNAV (GPS) RWY 2

DE KALB TAYLOR MUNI (DKB)

**▼** Baro-VNAV NA when using Aurora altimeter setting. For uncompensated Baro-VNAV systems, LNAV/VNAV NA below -16°C (4°F) or above 47°C (116°F). DME/DME RNP-0.3 NA. VDP NA when using Aurora altimeter setting. When local altimeter setting not received, use Aurora altimeter setting and increase all DA 61 feet and all MDA 80 feet; increase all LPV and LNAV/VNAV visibilities, LNAV Cats C/D visibility, and Circling Cats C/D visibility ¼ mile. For inop MALSR, increase LPV all Cats visibility to 1.

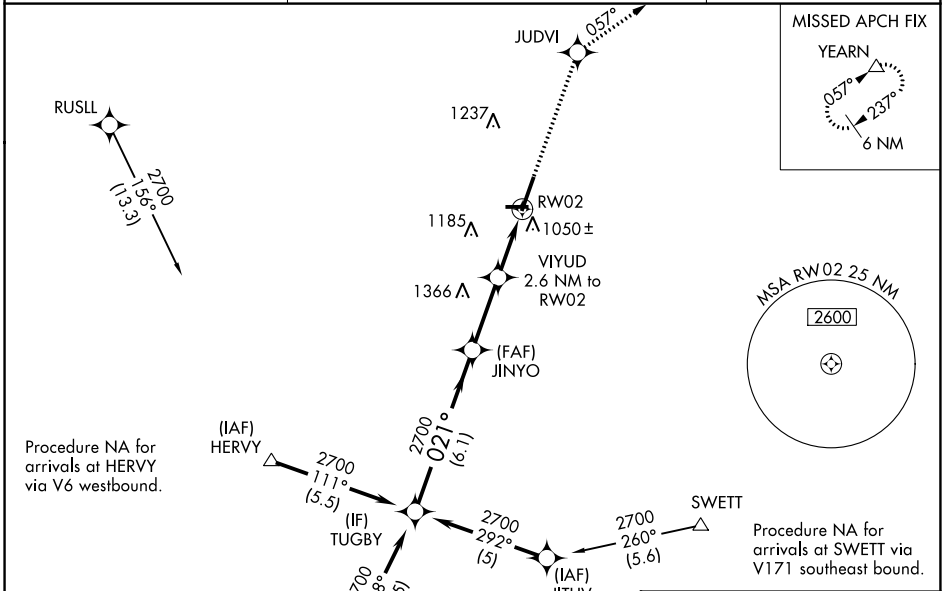
**MALSR**

**MISSED APPROACH:**  
Climb to 3000 direct JUDVI and via 057° track to YEARN and hold.

AWOS-3  
**119.075**

CHICAGO APP CON  
**133.5 349.0**

UNICOM  
**122.7 (CTAF) 0**



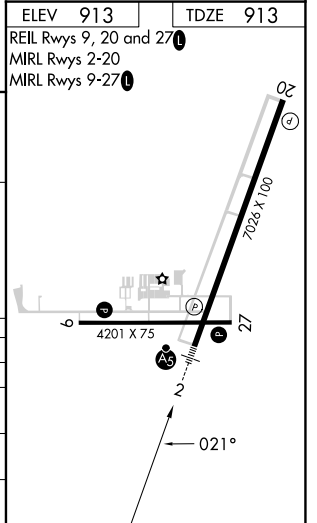
|                       |          |
|-----------------------|----------|
| ELEV 913              | TDZE 913 |
| REIL Rwy 9, 20 and 27 |          |
| MIRL Rwy 2-20         |          |
| MIRL Rwy 9-27         |          |

Procedure Turn NA

VGSI and RNAV glidepath not coincident (VGSI Angle 3.00/TCH 53).

| GP 3.00°<br>TCH 55 | TUGBY  | JINYO  | VIYUD<br>2.6 NM to RW02 | JUDVI  | YEARN       |
|--------------------|--------|--------|-------------------------|--------|-------------|
|                    | 2700   | 2700   | 2700                    | 3000   |             |
|                    | 021°   | 021°   | 028°                    | 057°   |             |
|                    | 6.1 NM | 2.8 NM | 1.4 NM                  | 1.2 NM |             |
|                    |        |        | *1.2 NM to RW02         |        |             |
|                    |        |        | *1800                   |        |             |
|                    |        |        |                         |        | *LNAV only. |

| CATEGORY     | A                     | B                     | C                     | D                       |
|--------------|-----------------------|-----------------------|-----------------------|-------------------------|
| LPV DA       |                       | 1207-½                | 294 (300-½)           |                         |
| LNAV/VNAV DA |                       | 1360-1                | 447 (500-1)           |                         |
| LNAV MDA     | 1360-½                | 447 (500-½)           | 1360-¾<br>447 (500-¾) | 1360-1<br>447 (500-1)   |
| CIRCLING     | 1360-1<br>447 (500-1) | 1500-1<br>587 (600-1) | 1600-2<br>687 (700-2) | 1740-2¾<br>827 (900-2¾) |



EC-3, 11 JUL 2024 to 08 AUG 2024

EC-3, 11 JUL 2024 to 08 AUG 2024