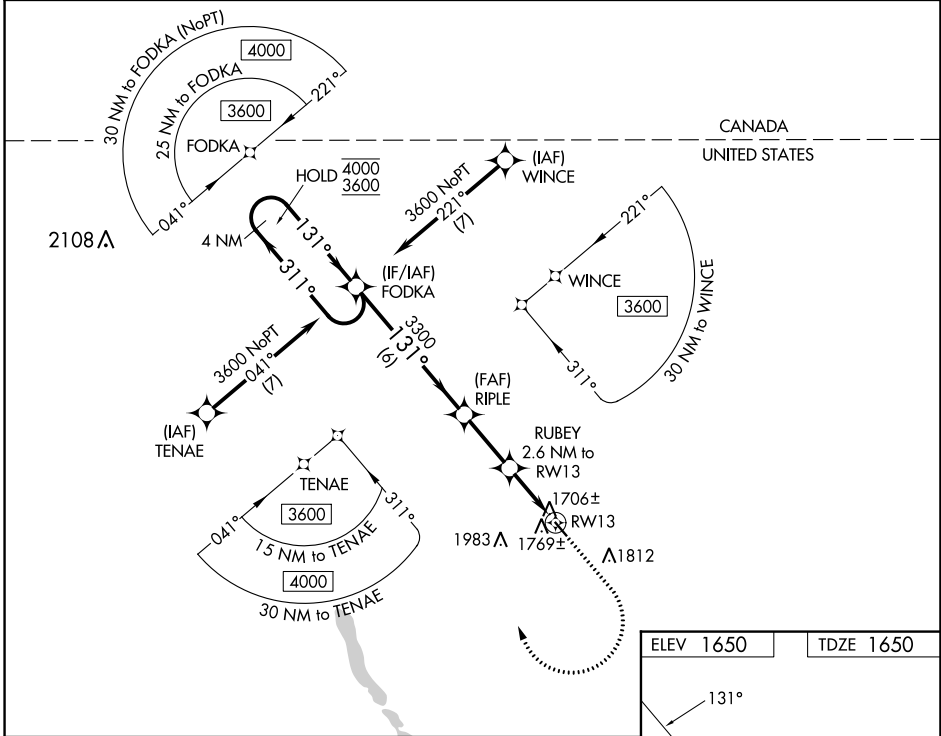


WAAS CH 45844 W13A	APP CRS 131°	Rwy Idg TDZE Apt Elev	3599 1650 1650
--	------------------------	-----------------------------	---

RNAV (GPS) RWY 13

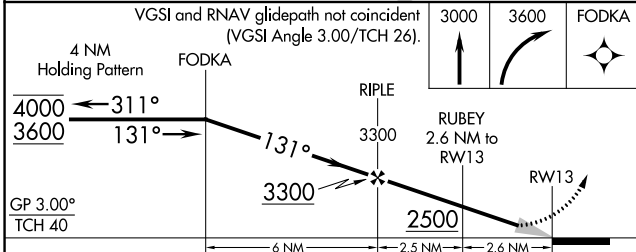
MOHALL MUNI (HBC)

RNP APCH - GPS.		MISSED APPROACH: Climb to 3000 then climbing right turn to 3600 direct FODKA and hold.
Use Minot Intl altimeter setting.		
MOT ASOS 118.725	MINOT APP CON ★ 119.6 363.8	UNICOM 122.8 (CTAF) 0



NC-1, 11 JUL 2024 to 08 AUG 2024

NC-1, 11 JUL 2024 to 08 AUG 2024



ELEV 1650	TDZE 1650
-----------	-----------

MIRL Rwy 13-31 0

CATEGORY	A	B	C	D
LPV DA	1977-1 327 (400-1)			NA
LNAV MDA	2100-1	450 (500-1)	2100-1 $\frac{3}{8}$ 450 (500-1 $\frac{3}{8}$)	NA
CIRCLING	2220-1	570 (600-1)	2380-2 730 (800-2)	NA