

LOC/DME I-ECH <b>109.3</b> Chan 30	APP CRS <b>115°</b>	Rwy Idg <b>7500</b> TDZE <b>92</b> Apt Elev <b>92</b>
--	------------------------	---

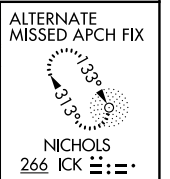
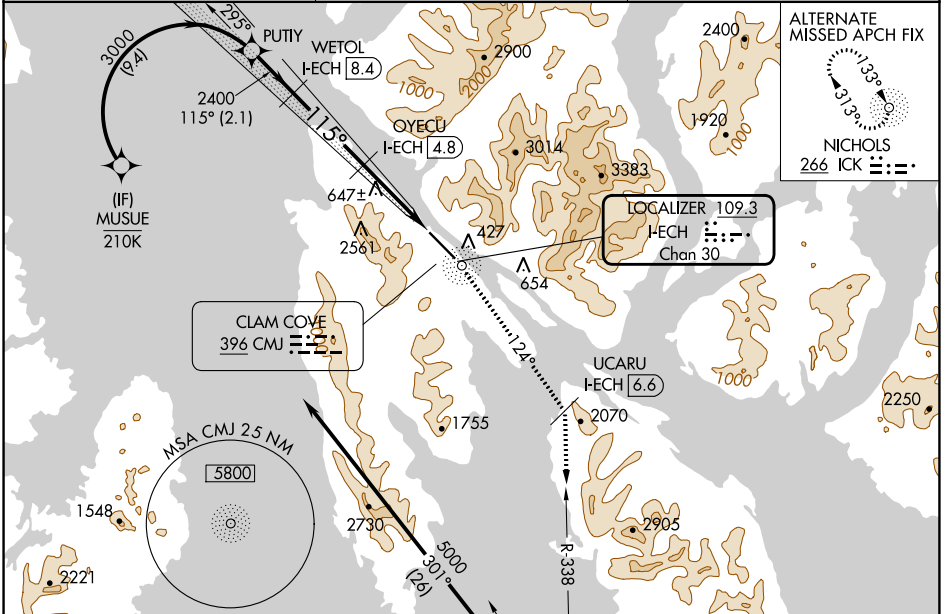
# ILS Z or LOC Z RWY 11

KETCHIKAN INTL (KTN)(PAKT)

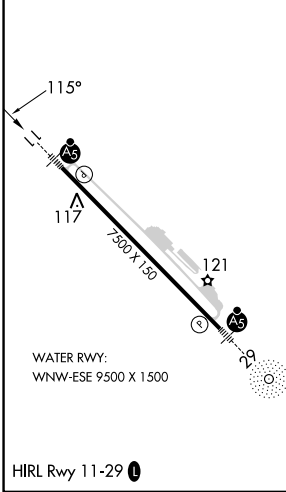
**⚠** RF, GPS, DME and ADF required. For inop MALSR, increase S-LOC 11 Cats C and D visibility to 2½. #RVR 1800 authorized with the use of FD or AP or HUD to DA.

**MALSRL**  
# MISSED APPROACH: Climb to 5000 direct CMJ NDB and on CMJ NDB bearing 124° to UCARU I-ECH 6.6 DME and on ANN VOR/DME R-338 to ANN VOR/DME and hold.  
# S-ILS 11 missed approach requires minimum climb of 305 feet per NM to 4000.  
S-LOC 11 missed approach requires minimum climb of 235 feet per NM to 4000.  
If unable to meet climb gradients, see LOC X RWY 11.

AFIS <b>134.45</b>	ANCHORAGE CENTER <b>118.5 284.6</b>	KETCHIKAN RADIO <b>123.6 (CTAF)</b>
-----------------------	--	--



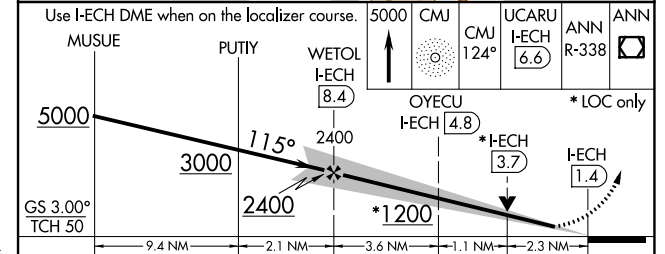
ELEV 92	TDZE 92
---------	---------



NICHOLS 266 ICK

Procedure NA for arrivals on ANN VOR/DME airway radials 290 CW 309.

IAF ANNETTE ISLAND 117.1 ANN Chan 118



CATEGORY	A	B	C	D
#S-ILS 11	292/24 200 (200-½)			
S-LOC 11	880/24 788 (800-½)	880/40 788 (800-¾)	880-1¼ 788 (800-1¼)	

AK, 11 JUL 2024 to 05 SEP 2024

AK, 11 JUL 2024 to 05 SEP 2024