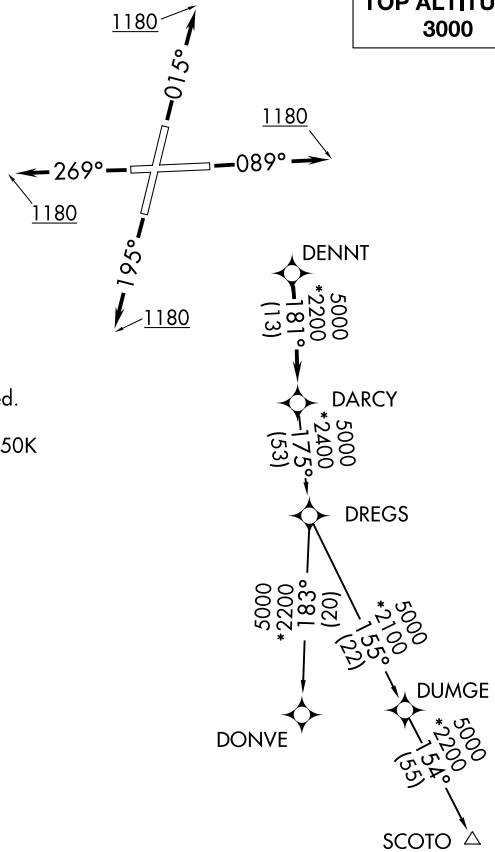


# DARCY SIX DEPARTURE (RNAV)

D-ATIS  
126.675  
GND CON  
120.425  
LEWIS TOWER ★  
134.8 (CTAF)  
CHICAGO DEP CON  
119.35 354.075

**TOP ALTITUDE:  
3000**



**TAKEOFF MINIMUMS:**

Rwys 9, 20, 27: Standard.  
Rwy 2: Standard with minimum climb of 420' per NM to 1200.

- NOTE: RADAR required.
- NOTE: DME/DME/IRU or GPS required.
- NOTE: RNAV 1.
- NOTE: Turbojet departures maintain 250K until advised by ATC.

NOTE: Chart not to scale.

## DEPARTURE ROUTE DESCRIPTION

**TAKEOFF RUNWAY 2:** Climb heading 015° to 1180, then as assigned by ATC, for vectors to DENNT. Thence. . . .

**TAKEOFF RUNWAY 9:** Climb heading 089° to 1180, then as assigned by ATC, for vectors to DENNT. Thence. . . .

**TAKEOFF RUNWAY 20:** Climb heading 195° to 1180, then as assigned by ATC, for vectors to DENNT. Thence. . . .

**TAKEOFF RUNWAY 27:** Climb heading 269° to 1180, then as assigned by ATC, for vectors to DENNT. Thence. . . .

. . . . on track 181° to DARCY, then on (transition). Maintain 3000.  
Expect filed altitude 10 minutes after departure.

DONVE TRANSITION (DARCY6.DONVE):  
SCOTO TRANSITION (DARCY6.SCOTO):