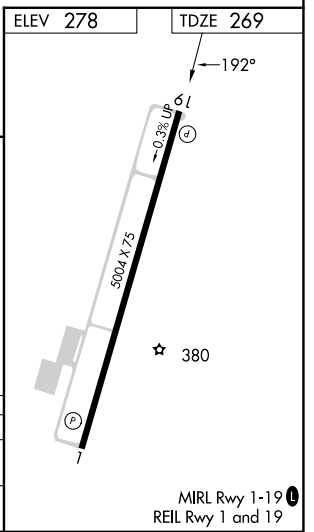
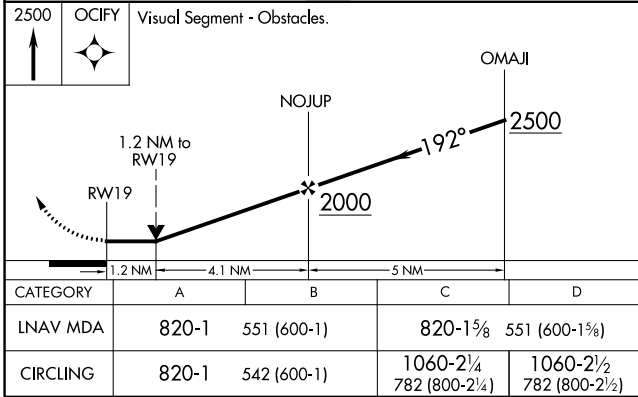
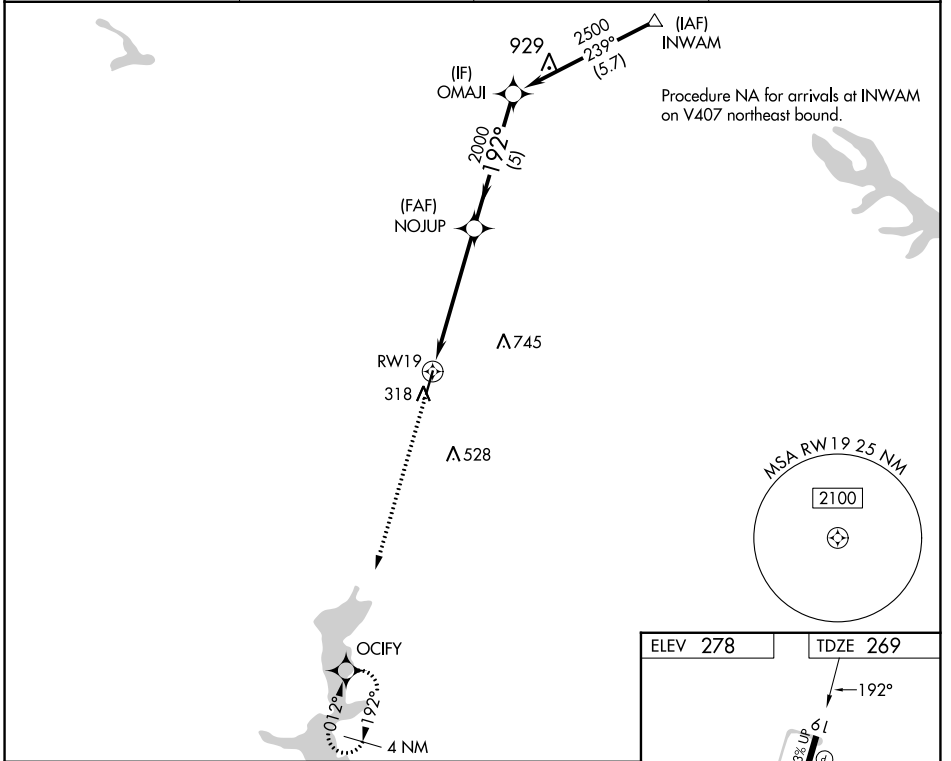


APP CRS	Rwy Idg	5004
192°	TDZE	269
	Apt Elev	278

RNAV (GPS) RWY 19

MINDEN (MNE)

RNP APCH.		MISSED APPROACH: Climb to 2500 direct OCIFY and hold.	
<p>▼ Rwy 19 helicopter visibility reduction below 3/4 SM NA. When local altimeter setting not received, use Barksdale AFB altimeter setting; increase all MDAs 80 feet: increase visibility LNAV Cats C/D 1/2 SM and Circling Cats C/D 1/4 SM.</p>			
AWOS-3PT	SHREVEPORT APP CON	GCO	UNICOM
119.325	123.75 360.725	135.075	122.8 (CTAF) ①



SC-4, 11 JUL 2024 to 08 AUG 2024

SC-4, 11 JUL 2024 to 08 AUG 2024