

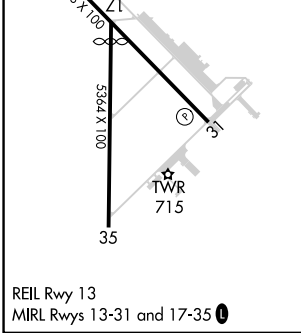
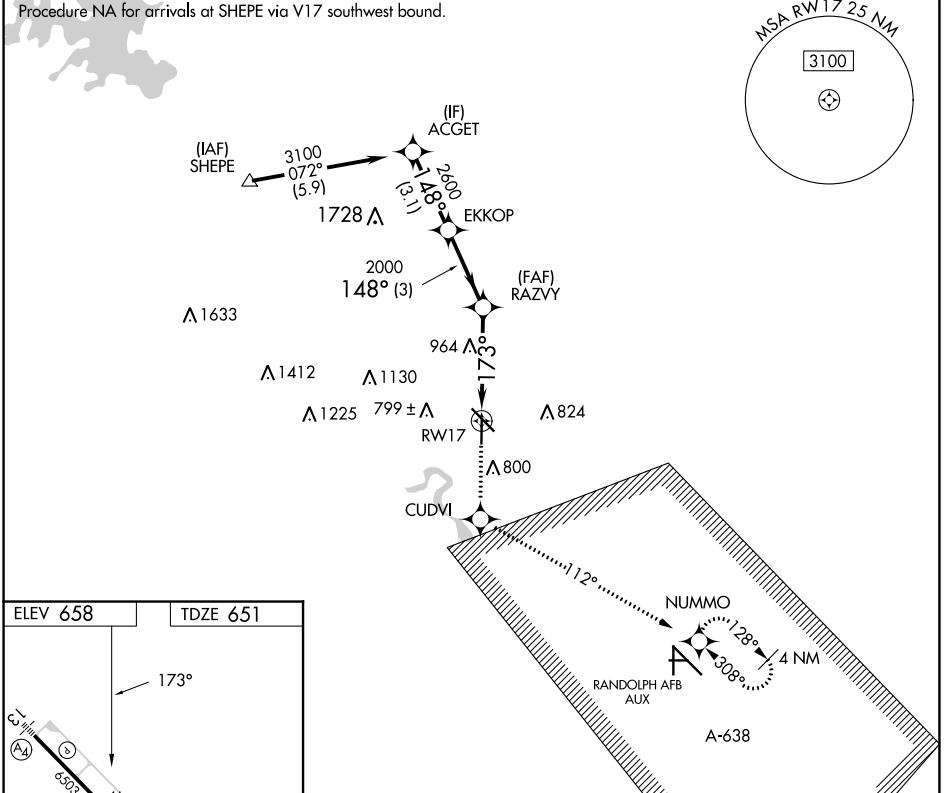
APP CRS	Rwy Idg	<b>4842</b>
<b>173°</b>	TDZE	<b>651</b>
	Apt Elev	<b>658</b>

# RNAV (GPS) RWY 17

NEW BRAUNFELS NTL (B.A.Z)

RNP APCH.	When local altimeter setting not received, use San Marcos Rgnl altimeter setting and increase all MDAs 60 feet and visibility Cat C ¼ SM. VDP NA when using San Marcos Rgnl altimeter setting.	MISSED APPROACH: Climb to 3500 direct CUDVI and via 112° track to NUMMO and hold, continue climb-in-hold to 3500.
ATIS <b>119.325</b> SAN ANTONIO APP CON <b>124.45 335.625</b> NEW BRAUNFELS TOWER* <b>127.05 (CTAF) 285.4</b> GND CON <b>120.175</b> CLNC DEL <b>134.75</b> CLNC DEL <b>134.75</b> (When twr closed)    UNICOM <b>122.7</b>		

ATIS	SAN ANTONIO APP CON	NEW BRAUNFELS TOWER*	GND CON	CLNC DEL	CLNC DEL	UNICOM
119.325	124.45 335.625	127.05 (CTAF) 285.4	120.175	134.75	134.75 (When twr closed)	122.7



3500	CUDVI	NUMMO	ACGET	
↑	✧	✧	EKKOP	3100
	112°		148°	Procedure Turn NA
	1.6 NM to RW17	RAZVY	2600	
	3.03° TCH 45	2000		
	1.6 NM	2.5 NM	3 NM	3.1 NM
CATEGORY	A	B	C	D
LNAV MDA	1220-1	569 (600-1)	1220-1½ 569 (600-1½)	1220-1¾ 569 (600-1¾)

SC-3, 11 JUL 2024 to 08 AUG 2024

SC-3, 11 JUL 2024 to 08 AUG 2024