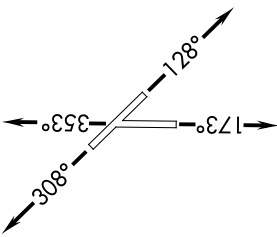


SC-3, 11 JUL 2024 to 08 AUG 2024

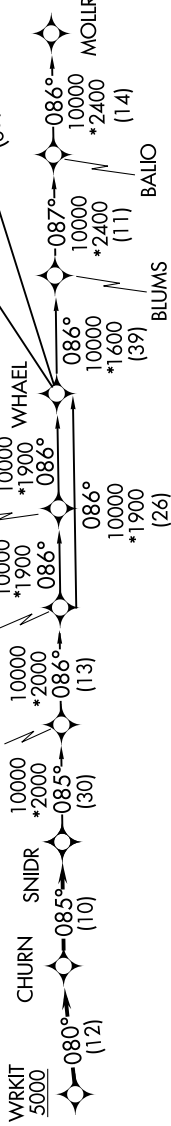
SAN ANTONIO DEP CON
128.05 290.225
ATS
119.325
CLNC DEL
134.75
GND CON
120.175
NEW BRAUNFELS TOWER *
127.05 285.4



TOP ALTITUDE:
ASSIGNED BY ATC

RNAV 1 - DME/DME IRU or GPS.
RADAR required.

TAKEOFF MINIMUMS
Rwys 13, 17, 31, 35: Standard.

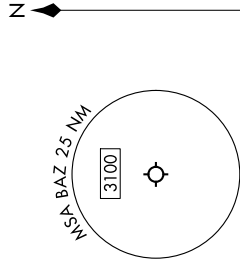


DEPARTURE ROUTE DESCRIPTION

- TAKEOFF RUNWAY 13: Climb on heading 128° or as assigned by ATC, for vectors to WRKIT, thence . . .
- TAKEOFF RUNWAY 17: Climb on heading 173° or as assigned by ATC, for vectors to WRKIT, thence . . .
- TAKEOFF RUNWAY 31: Climb on heading 308° or as assigned by ATC, for vectors to WRKIT, thence . . .
- TAKEOFF RUNWAY 35: Climb on heading 353° or as assigned by ATC, for vectors to WRKIT, thence . . .

. . . on track 080° to CHURN, then on track 085° to SNIDR, then on transition. Maintain ATC assigned altitude.

- BLUMS TRANSITION (SNIDR1.BLUMS)
- CAAGE TRANSITION (SNIDR1.CAAGE)
- FFSH TRANSITION (SNIDR1.FFSH)
- MOLLR TRANSITION (SNIDR1.MOLLR)
- SEEDS TRANSITION (SNIDR1.SEEDS)
- WEMAR TRANSITION (SNIDR1.WEMAR)
- WHAEL TRANSITION (SNIDR1.WHAEL)
- WYLSN TRANSITION (SNIDR1.WYLSN)



Note: Chart not to scale.

SC-3, 11 JUL 2024 to 08 AUG 2024