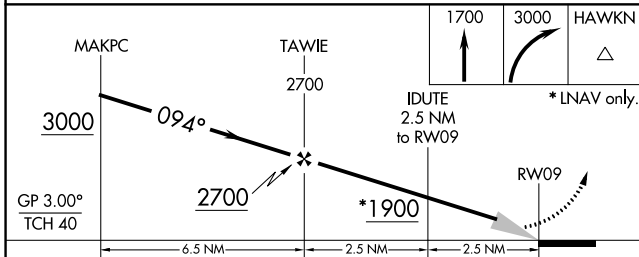
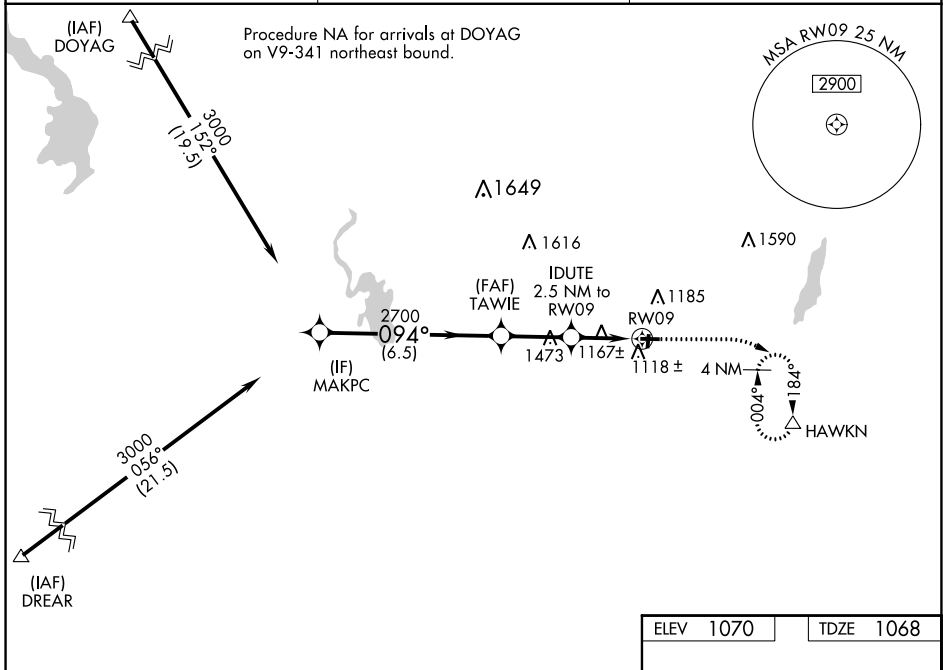


WAAS CH <b>42743</b> <b>W09A</b>	APP CRS <b>094°</b>	Rwy Idg TDZE Apf Elev	<b>3401</b> <b>1068</b> <b>1070</b>
--	------------------------	-----------------------------	---

# RNAV (GPS) RWY 9

HARTFORD MUNI (HXF)

RNP APCH.		MISSED APPROACH: Climb to 1700 then climbing right turn to 3000 direct HAWKN and hold, continue climb-in-hold to 3000.
<p>▼ Circling NA to Rwys 18 and 36.</p> <p>▲ NA Baro-VNAV NA.</p> <p>Use Westbend altimeter setting.</p>		
ETB AWOS-3 <b>120.0</b>	MILWAUKEE APP CON <b>125.35 307.0</b>	UNICOM <b>123.0 (CTAF) 0</b>



ELEV 1070	TDZE 1068
-----------	-----------

MIRL Rwy 9-27 0

REIL Rws 9 and 27 0

CATEGORY	A	B	C	D
LPV DA	1372-7/8	304 (400-7/8)		NA
LNAV/VNAV DA	1372-7/8	304 (400-7/8)		NA
LNAV MDA	1480-1	412 (500-1)		NA
CIRCLING	1560-1	490 (500-1)		NA

EC-3, 11 JUL 2024 to 08 AUG 2024

EC-3, 11 JUL 2024 to 08 AUG 2024