

LOC I-DSY <b>110.1</b> Chan <b>38</b>	APP CRS <b>011°</b>	Rwy Idg TDZE <b>253</b> Apt Elev <b>265</b>
---	------------------------	---

# ILS or LOC RWY 1

SEARCY RGNL (SRC)

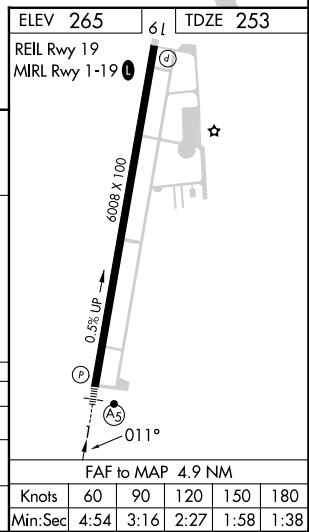
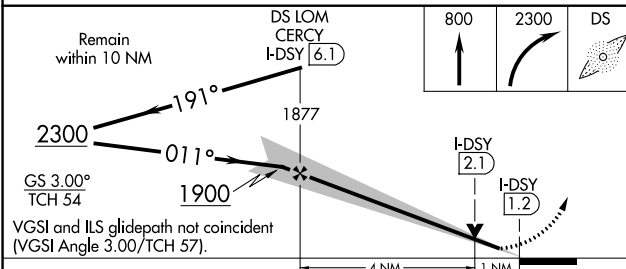
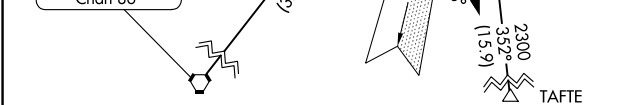
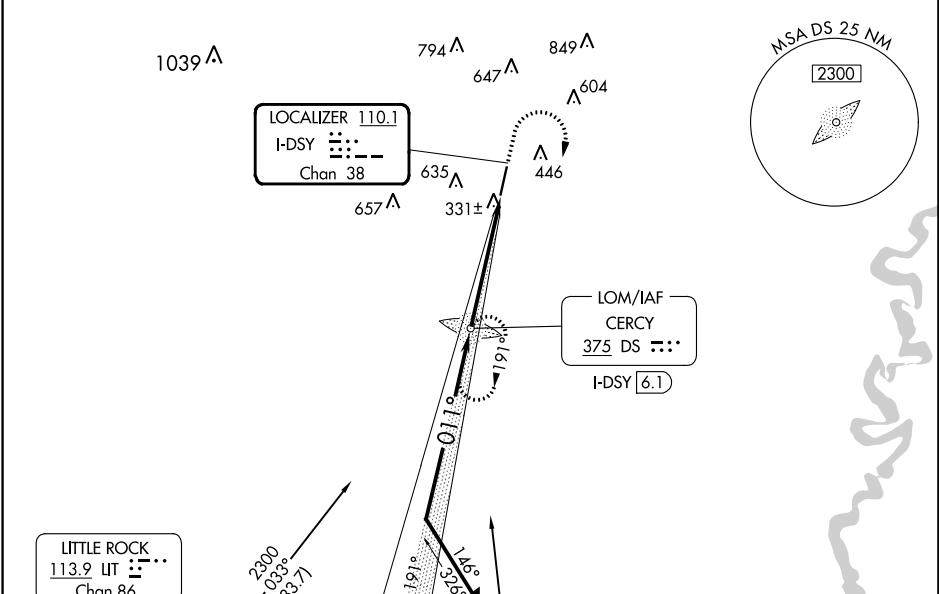
ADF required.

**⚠** Circling NA for Cats B and C west of Rwy 1-19. VDP NA when using Bill and Hillary Clinton Nil/Adams Fld altimeter setting. When local altimeter setting not received, use Bill and Hillary Clinton Nil/Adams Fld altimeter setting: increase ILS DA to 542 feet; increase all MDAs 100 feet and S-LOC 1 Cat C and Circling Cat C visibility  $\frac{1}{4}$  SM. For inop ALS, increase S-LOC 1 Cat C visibility to 1 SM.



**MISSED APPROACH:** Climb to 800 then climbing right turn to 2300 direct CERCY LOM and hold, continue climb-in-hold to 2300.

AWOS-3PT <b>128.325</b>	LITTLE ROCK APP CON <b>119.75 291.775</b>	CLNC DEL <b>119.75</b>	UNICOM <b>122.7 (CTAF)</b>
----------------------------	--	---------------------------	-------------------------------



CATEGORY	A	B	C	D
S-ILS 1	453- $\frac{1}{2}$	200 (200- $\frac{1}{2}$ )		NA
S-LOC 1	600- $\frac{1}{2}$	347 (400- $\frac{1}{2}$ )	600- $\frac{5}{8}$ 347 (400- $\frac{5}{8}$ )	NA
CIRCLING	760-1	495 (500-1)	780-1 $\frac{1}{2}$ 515 (600-1 $\frac{1}{2}$ )	NA

SC-1, 11 JUL 2024 to 08 AUG 2024

SC-1, 11 JUL 2024 to 08 AUG 2024