

VORTAC SAC <b>115.2</b> Chan <b>99</b>	APP CRS <b>241°</b>	Rwy Idg TDZE Aprt Elev	<b>N/A</b> <b>N/A</b> <b>117</b>
--	------------------------	------------------------------	--

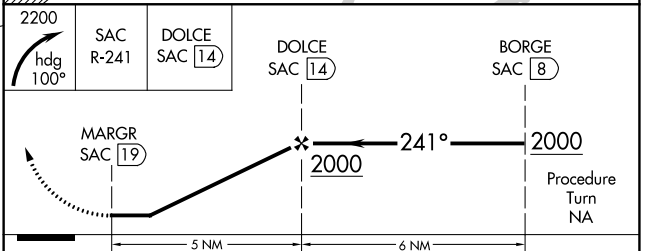
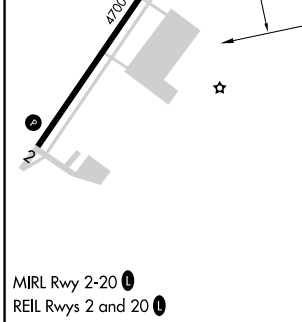
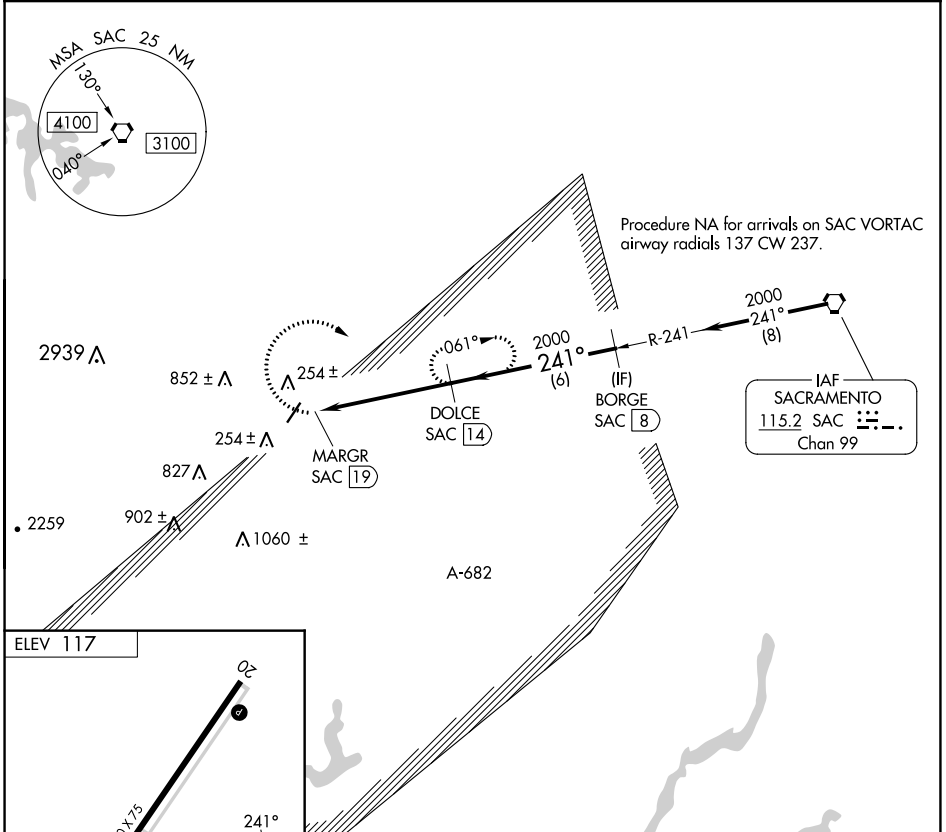
# VOR-A

NUT TREE (VCB)

**⚠** Rwy 2 helicopter visibility reduction below 1 SM NA. DME required. Circling Rwy 2 NA at night. Circling NA west of Rwy 2-20.

**⚠** MISSED APPROACH: Climbing right turn to 2200 on heading 100° and SAC R-241 to DOLCE/14 DME and hold.

ASOS <b>134.75</b>	TRAVIS APP CON <b>128.4 281.45</b>	CTAF <b>122.85</b>
-----------------------	---------------------------------------	-----------------------



CATEGORY	A	B	C	D
<b>C</b> CIRCLING	920-1	803 (900-1)	960-2½ 843 (900-2½)	1360-3 1243 (1300-3)

SW-2, 11 JUL 2024 to 08 AUG 2024

SW-2, 11 JUL 2024 to 08 AUG 2024