

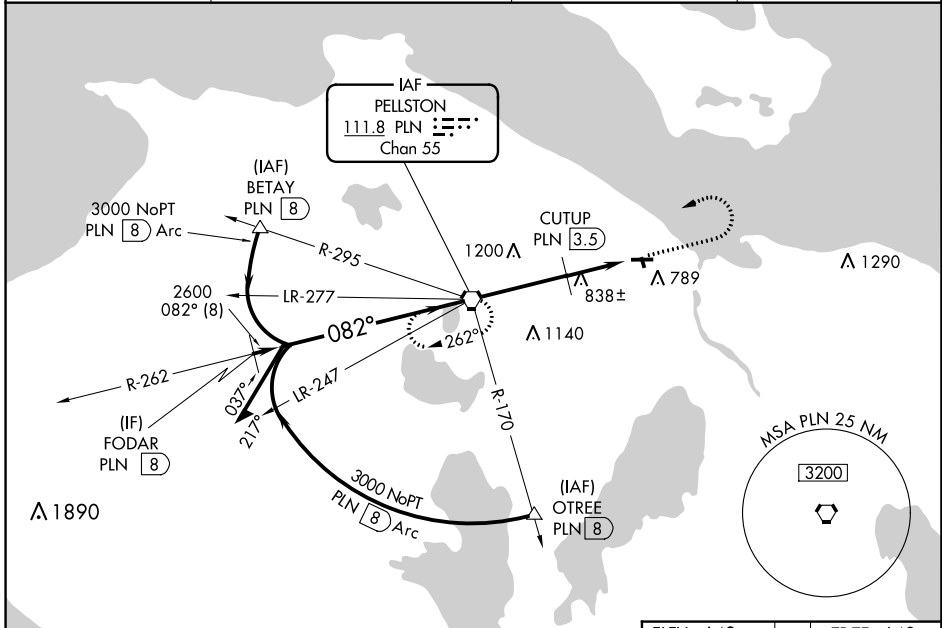
VORTAC PLN 111.8 Chan 55	APP CRS 082°	Rwy Idg 4004 TDZE 640 Apt Elev 640
--	------------------------	---

VOR RWY 10
CHEBOYGAN COUNTY (SLH)

▼ Helicopter visibility reduction below 1 SM NA. Night landing Rwy 10, 17, 35 NA. When local altimeter setting not received, use Pellston altimeter setting; increase all MDA 60 feet; increase S-10 Cat B visibility ¼ SM, S-10 Cat C visibility ½ SM, Circling Cat B visibility ¼ SM and Circling Cat C visibility ½ SM; increase CUTUP fix minimums S-10 Cat C visibility ½ SM.

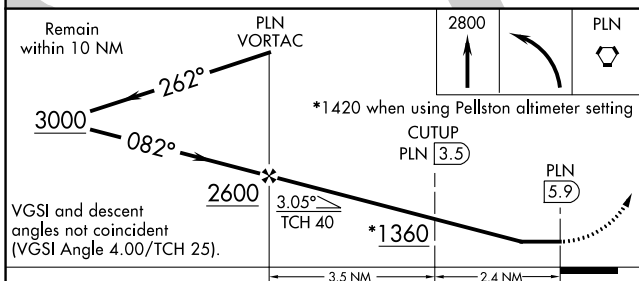
MISSED APPROACH:
Climb to 2800 then left turn direct PLN VORTAC and hold.

AWOS-3 118.175	MINNEAPOLIS CENTER 134.6 354.05	UNICOM 122.8 (CTAF)	122.5 0
--------------------------	---	-------------------------------	----------------

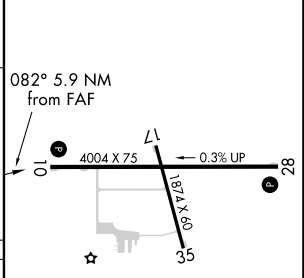


EC-1, 11 JUL 2024 to 08 AUG 2024

EC-1, 11 JUL 2024 to 08 AUG 2024



ELEV 640	TDZE 640
----------	----------



CATEGORY	A	B	C	D
S-10	1360-1	720 (800-1)	1360-2 720 (800-2)	NA
C CIRCLING	1360-1	720 (800-1)	1360-2 720 (800-2)	NA
CUTUP FIX MINIMUMS				
S-10	1100-1	460 (500-1)	1100-1 3/8 460 (500-1 3/8)	NA
C CIRCLING	1140-1	500 (500-1)	1140-1 1/2 500 (500-1 1/2)	NA

REIL Rwys 10 and 28 **0**
MIRL Rwy 10-28 and 17-35 **0**

FAF to MAP 5.9 NM

Knots	60	90	120	150	180
Min:Sec	5:54	3:56	2:57	2:22	1:58