

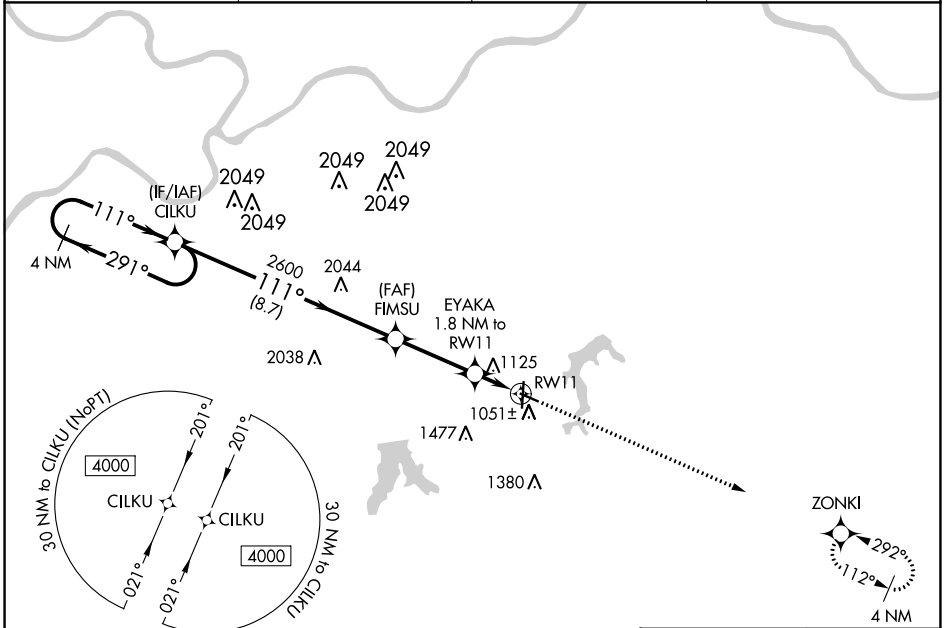
WAAS CH 99405 W11A	APP CRS 111°	Rwy Idg 4000 TDZE 1004 Apt Elev 1004
--	------------------------	---

RNAV (GPS) RWY 11

LEE'S SUMMIT MUNI (LXT)

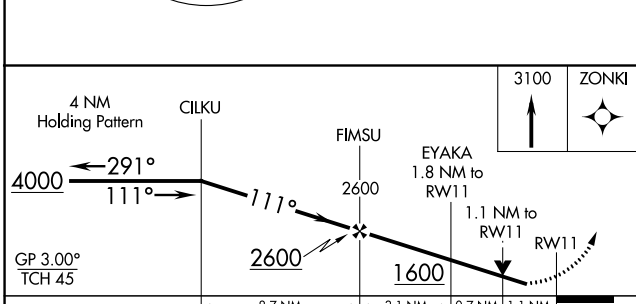
RNP APCH - GPS.		MISSED APPROACH: Climb to 3100 direct ZONKI and hold.
⚠ For uncompensated Baro-VNAV systems, LNAV/VNAV NA below -17°C or above 54°C. Rwy 11 helicopter visibility reduction below 3/4 SM NA.		

ASOS 124.175	KANSAS CITY APP CON 118.4 307.35	CLNC DEL 118.45	UNICOM 122.8 (CTAF) 📻
------------------------	--	---------------------------	--

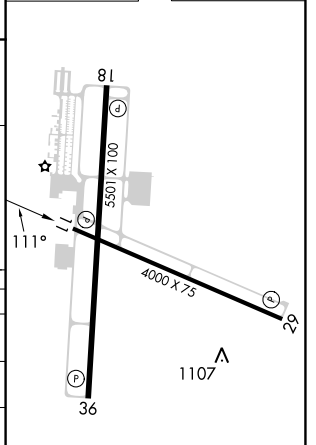


NC-3, 11 JUL 2024 to 08 AUG 2024

NC-3, 11 JUL 2024 to 08 AUG 2024



ELEV 1004	TDZE 1004
-----------	-----------



CATEGORY	A	B	C	D
LPV DA		1254-1	250 (300-1)	
LNAV/VNAV DA		1381-1 1/4	377 (400-1 1/4)	
LNAV MDA		1380-1	376 (400-1)	
CIRCLING	1440-1	1540-1	1780-2 1/4	1780-2 1/2
	436 (500-1)	536 (600-1)	776 (800-2 1/4)	776 (800-2 1/2)

REIL Rws 11, 18, 29 and 36 **📻**
MIRL Rws 11-29 and 18-36 **📻**