

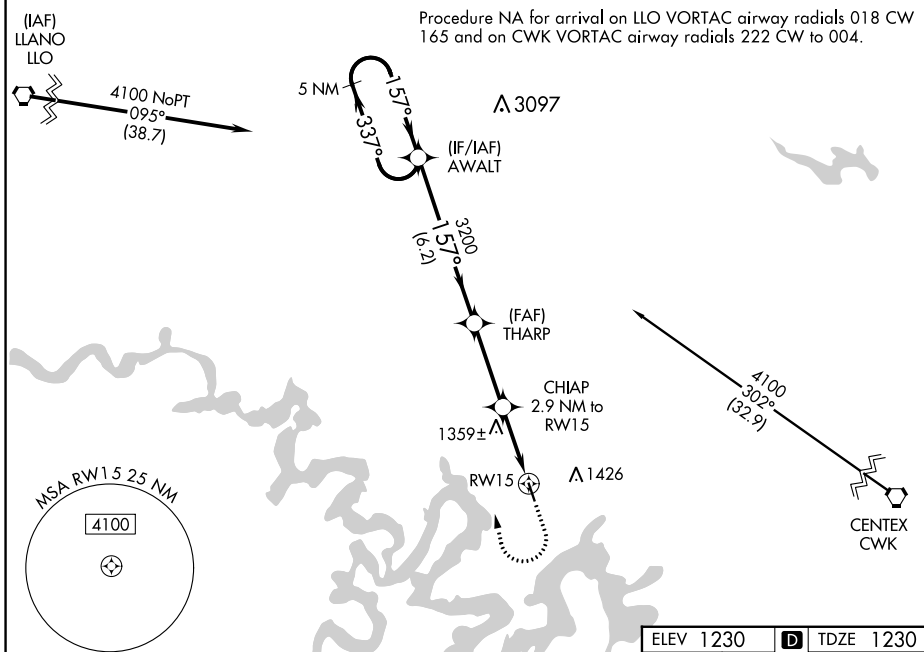
WAAS CH <b>81831</b> <b>W15A</b>	APP CRS <b>157°</b>	Rwy Idg TDZE Apt Elev	<b>3808</b> <b>1230</b> <b>1230</b>
--	------------------------	-----------------------------	---

# RNAV (GPS) RWY 15

LAGO VISTA TX/RUSTY ALLEN (RYW)

<p>▼ For uncompensated Baro-VNAV systems, LNAV/VNAV NA below -17°C (2°F) or above 54°C (130°F). DME/DME RNP-0.3 NA. Rwy 15 helicopter visibility reduction below ¾ SM NA.</p>	<p>MISSED APPROACH: Climb to 1700 then climbing right turn to 4100 direct AWALT and hold.</p>
---	---

AWOS-3PT <b>119.375</b>	AUSTIN APP CON <b>119.0 370.85</b>	UNICOM <b>122.725 (CTAF)</b> <b>0</b>
----------------------------	---------------------------------------	--



SC-3, 11 JUL 2024 to 08 AUG 2024

SC-3, 11 JUL 2024 to 08 AUG 2024

<p>VGSI and RNAV glidepath not coincident (VGSI Angle 4.00/TCH 56).</p>		1700	4100	AWALT
<p>5 NM Holding Pattern</p>		↑	↪	✦
<p>GP 3.00° TCH 40</p>		*LNAV only.		
<p>AWALT</p>		<p>THARP 3200 CHIAP 2.9 NM to RWY 15 *2180 *0.8 NM to RWY 15</p>		
<p>← 337° 157° →</p>		<p>← 157° to RWY 15</p>		
<p>← 6.2 NM → 3.2 NM → 2.1 NM → 0.8 NM →</p>		<p>3008 ft 33° 0.6° UP</p>		
CATEGORY	A	B	C	D
LPV DA	1480-1	250 (300-1)		NA
LNAV/VNAV DA	1641-1⅜	411 (500-1⅜)		NA
LNAV MDA	1620-1	390 (400-1)		NA
CIRCLING	1660-1 430 (500-1)	1860-1 630 (700-1)		NA

MIRL Rwy 15-33 **0**