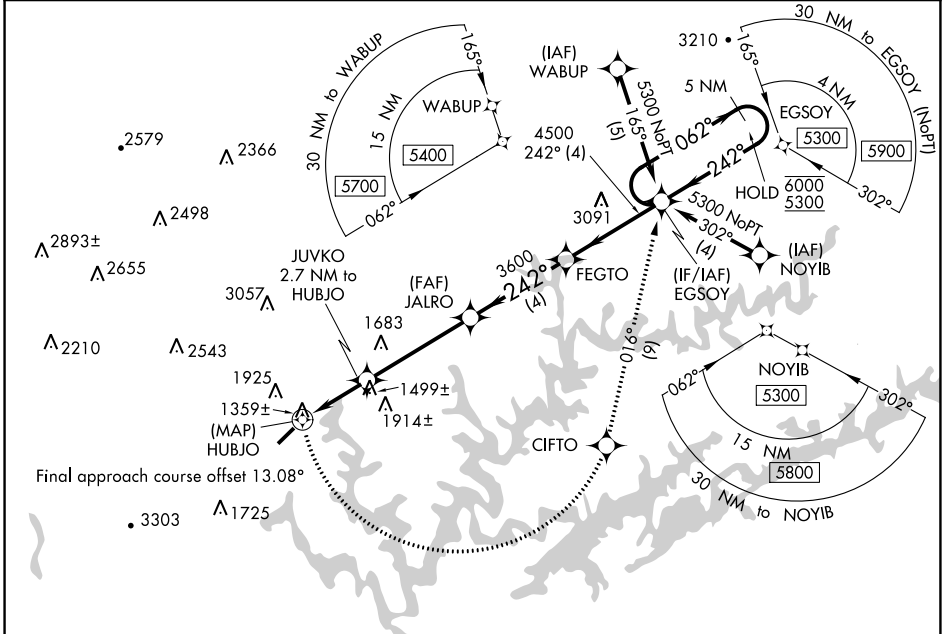


WAAS CH <b>77736</b> <b>W23A</b>	APP CRS <b>242°</b>	Rwy Idg TDZE Apt Elev	<b>4000</b> <b>1180</b> <b>1180</b>
--	------------------------	-----------------------------	---

# RNAV (GPS) RWY 23

COLONEL TOMMY C STINER AIRFIELD (JAU)

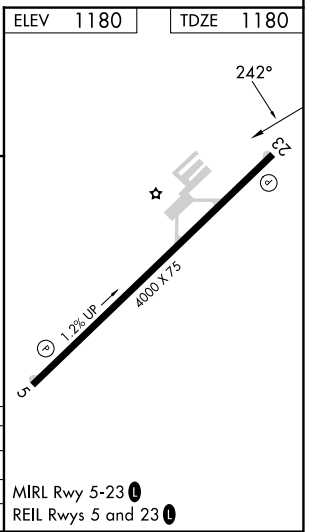
RNP APCH. ▼ Circling NA northwest of Rwy 5-23. Rwy 23 helicopter visibility reduction below 3/4 SM NA.	MISSED APPROACH: Climbing left turn to 5300 direct CIFTO and on track 016° to EGSOY and hold, continue climb-in-hold to 5300.	
AWOS-3 <b>124.975</b>	ATLANTA CENTER <b>133.6 254.3</b>	UNICOM <b>122.8 (CTAF) 0</b>



SE-1, 11 JUL 2024 to 08 AUG 2024

SE-1, 11 JUL 2024 to 08 AUG 2024

ELEV 1180	TDZE 1180							
Visual Segment - Obstacles.								
5300	CIFTO	tr 016°	EGSOY	JUVKO 2.7 NM to HUBJO	JALRO	FEGTO	EGSOY	5 NM Holding Pattern
CATEGORY	A	B	C	D				
LP MDA	1640-1	460 (500-1)	NA					
LNVA MDA	1920-1	740 (800-1)	NA					
CIRCLING	1920-1	740 (800-1)	NA					



MIRL Rwy 5-23 0  
REIL Rwy 5 and 23 0