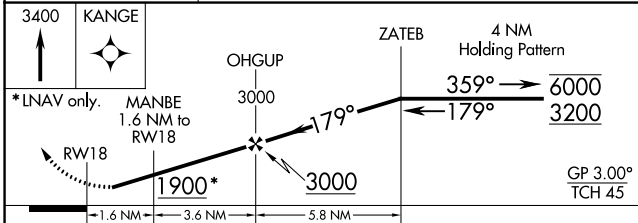
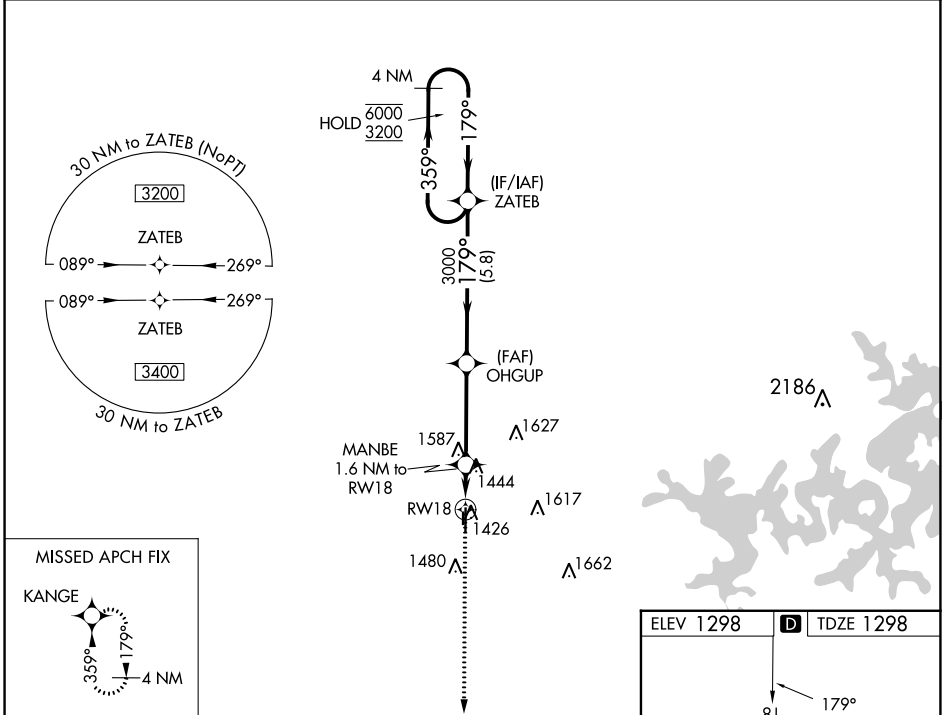


WAAS CH 77830 W18A	APP CRS 179°	Rwy Idg TDZE Apt Elev	4196 1298 1298
--	------------------------	-----------------------------	---

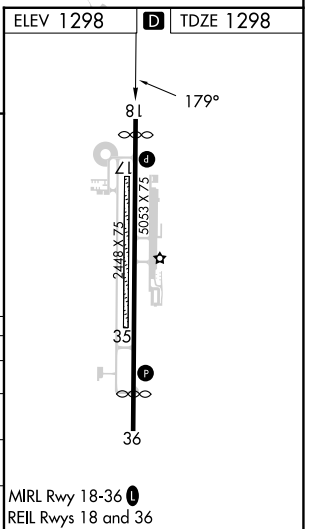
RNAV (GPS) RWY 18

BENTONVILLE MUNI/LOUISE M THADEN FLD (VBT)

RNP APCH.		MISSED APPROACH: Climb to 3400 direct KANGE and hold.	
<p>⚠ Circling NA to Rwy 17 and 35. Rwy 18 helicopter visibility reduction below 3/4 SM NA. For uncompensated Baro-VNAV systems, LNAV/VNAV NA below -17°C or above 54°C.</p>			
AWOS-3PT 134.975	RAZORBACK APP CON ★ 121.0 (WEST) 244.575	CLNC DEL 121.05 263.125	UNICOM 122.975 (CTAF) 📻



CATEGORY	A	B	C	D
LPV DA	1548-1		250 (300-1)	
LNAV/VNAV DA	1688-1½		390 (400-1½)	
LNAV MDA	1700-1 402 (500-1)		1700-1½ 402 (500-1½)	
📻 CIRCLING	1780-1 482 (500-1)		1920-1¾ 622 (700-1¾) 1940-2 642 (700-2)	



SC-1, 11 JUL 2024 to 08 AUG 2024

SC-1, 11 JUL 2024 to 08 AUG 2024