

APP CRS	Rwy Idg	4001
044°	TDZE	558
	Apt Elev	570

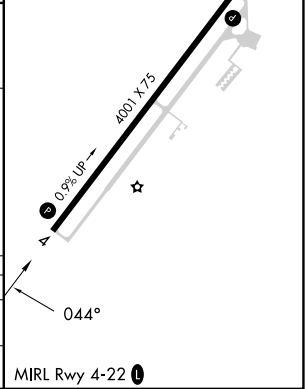
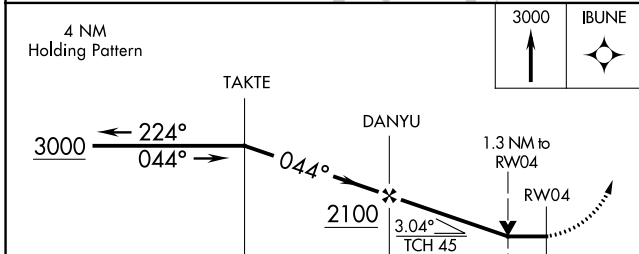
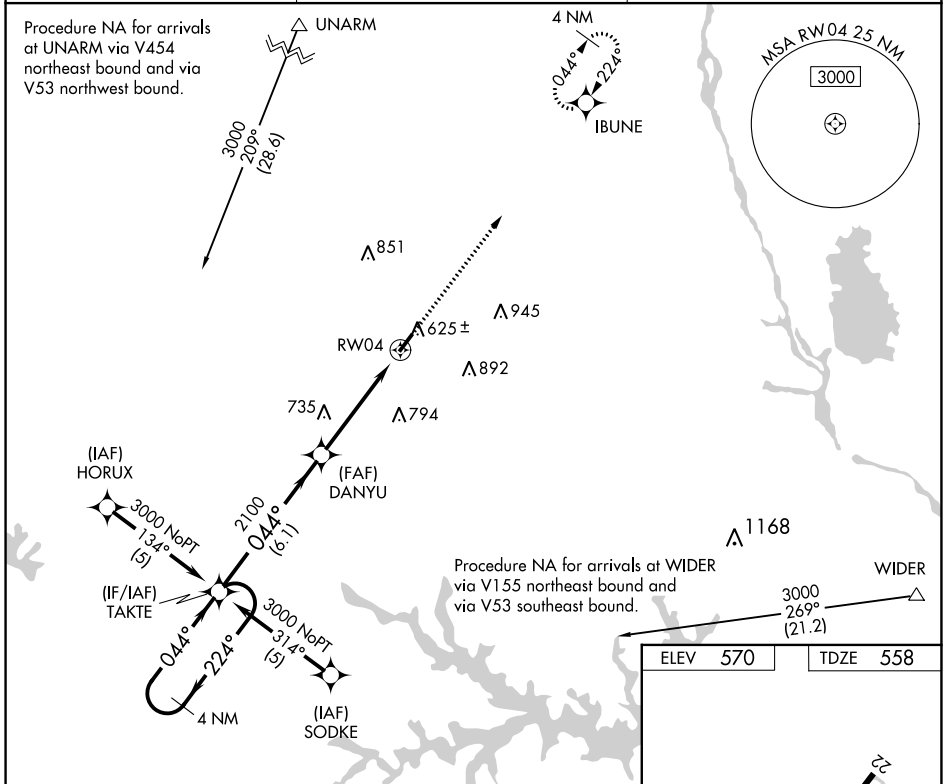
RNAV (GPS) RWY 4

NEWBERRY COUNTY (EOE)

▼ DME/DME RNP-0.3 NA. When local altimeter setting not received, use Greenwood County altimeter setting and increase all MDA 80 feet. VDP NA when using Greenwood County altimeter setting. Helicopter visibility reduction below 3/4 SM NA.

▲ MISSED APPROACH: Climb to 3000 direct IBUNE and hold.

AWOS-3 124.275	COLUMBIA APP CON 133.4 285.6	UNICOM 122.8 (CTAF) 0
--------------------------	--	---------------------------------



CATEGORY	A	B	C	D
LNVA MDA	1000-1	442 (500-1)	NA	
CIRCLING	1080-1 510 (600-1)	1160-1 590 (600-1)	NA	

SE-2, 11 JUL 2024 to 08 AUG 2024

SE-2, 11 JUL 2024 to 08 AUG 2024