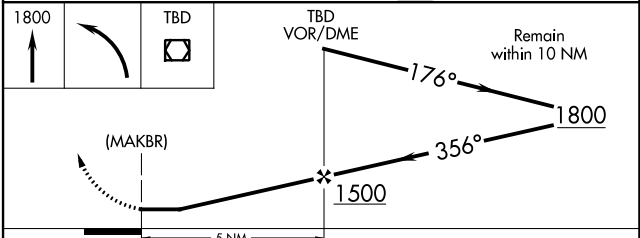
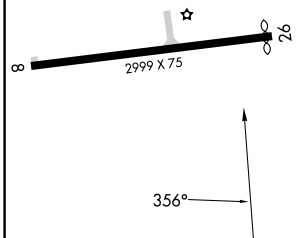
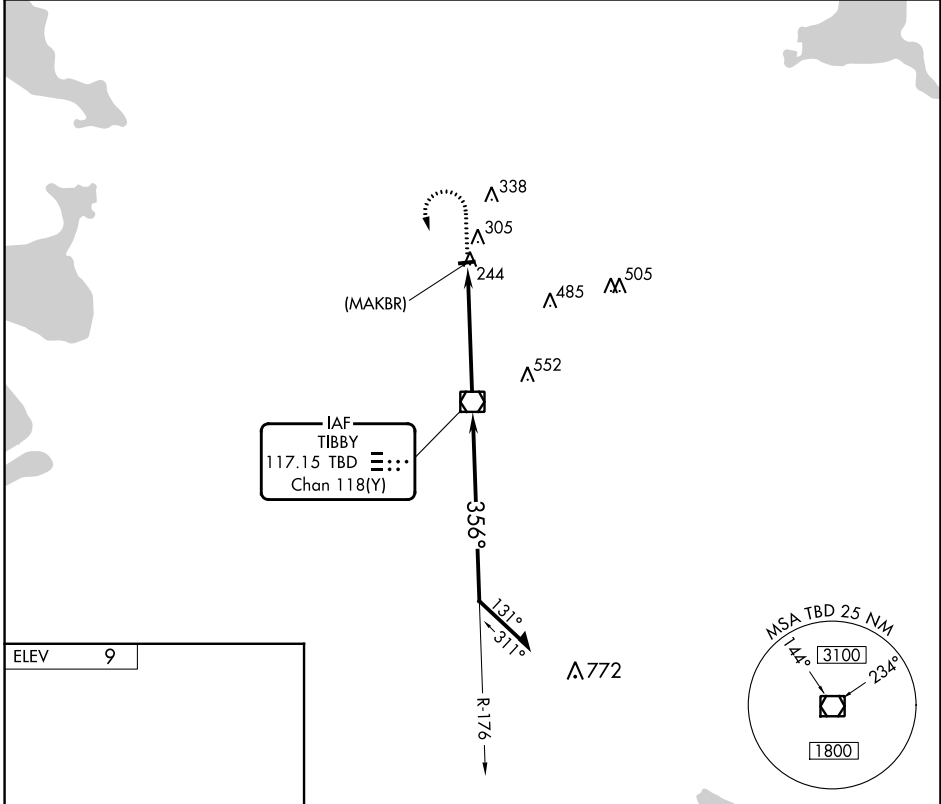


VOR/DME TBD <b>117.15</b> Chan <b>118(Y)</b>	APP CRS <b>356°</b>	Rwy Idg TDZE Apt Elev	<b>N/A</b> <b>N/A</b> <b>9</b>
--	------------------------	-----------------------------	--------------------------------------

**VOR or GPS-A**  
THIBODAUX MUNI (L83)

<b>▽</b> Obtain local altimeter on CTAF; if not received, use Louis Armstrong New Orleans Intl altimeter setting.	<b>△NA</b> MISSED APPROACH: Climb to 1800 then left turn direct TBD VOR/DME.
---	--

NEW ORLEANS APP CON <b>118.9 256.9</b>	UNICOM <b>122.8 (CTAF) 0</b>
---	---------------------------------



MIRL Rwy 8-26  
REIL Rwys 8 and 26

FAF to MAP 5 NM

Knots	60	90	120	150	180
Min:Sec	5:00	3:20	2:30	2:00	1:40

CATEGORY	A	B	C	D
CIRCLING	660-1	651 (700-1)	NA	
LOUIS ARMSTRONG NEW ORLEANS INTL ALTIMETER SETTING MINIMUMS				
CIRCLING	760-1	760-1½	NA	
	751 (800-1)	751 (800-1½)		

SC-4, 11 JUL 2024 to 08 AUG 2024

SC-4, 11 JUL 2024 to 08 AUG 2024