

WAAS CH 48900 W01A	APP CRS 005°	Rwy Idg 3001 TDZE 228 Apt Elev 228
--	------------------------	---

RNAV (GPS) RWY 1

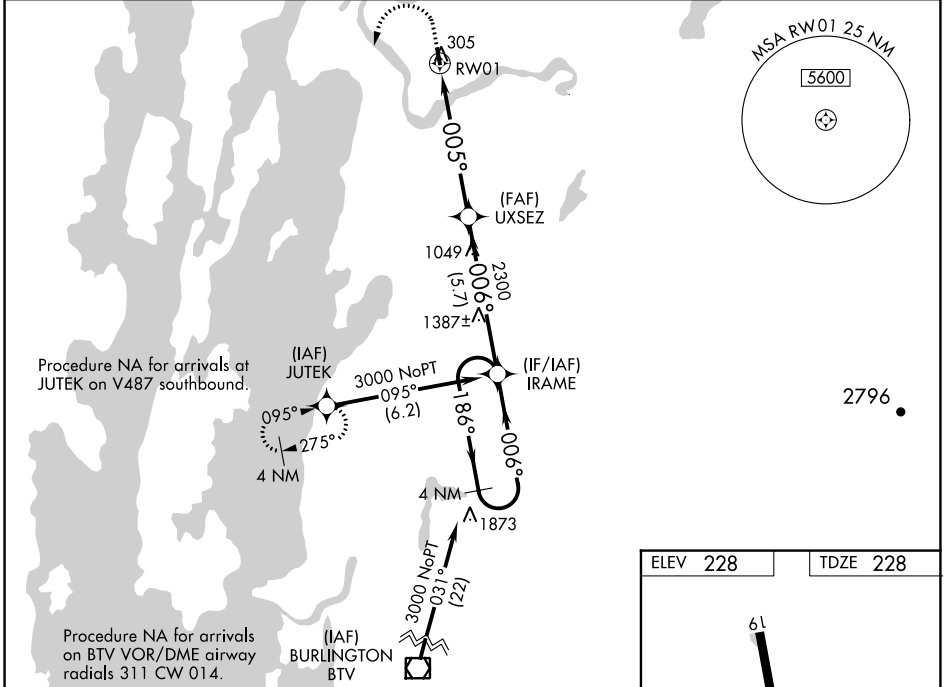
FRANKLIN COUNTY STATE (F'SO)

RNP APCH-GPS.

▼ For uncompensated Baro-VNAV systems, LNAV/VNAV NA below -1.5°C or above 54°C.
▲ Rwy 1 helicopter visibility reduction below 1 SM NA.
Procedure NA at night.

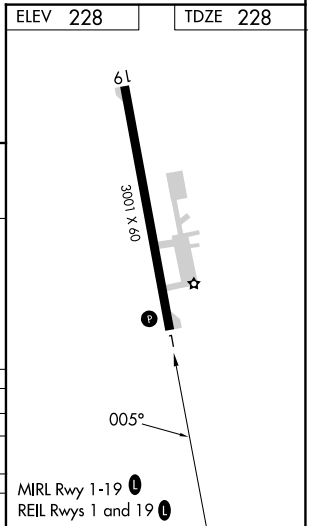
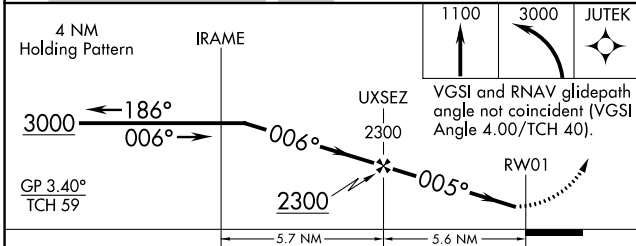
MISSED APPROACH: Climb to 1100 then climbing left turn to 3000 direct JUTEK and hold.

AWOS-3 119.025	BURLINGTON APP CON★ 121.1 (EAST) 278.8 (WEST) 360.8	UNICOM 122.8 (CTAF) 0
--------------------------	--	--



NE-1, 11 JUL 2024 to 08 AUG 2024

NE-1, 11 JUL 2024 to 08 AUG 2024



CATEGORY	A	B	C	D
LPV DA	512-1	284 (300-1)		NA
LNAV/VNAV DA	1024-2½	796 (800-2½)		NA
LNAV MDA	920-1	692 (700-1)		NA
CIRCLING	920-1	960-1		
	692 (700-1)	732 (800-1)		NA