

WAAS CH 70407 W29A	APP CRS 291°	Rwy Idg TDZE Apt Elev	5480 127 145
--	------------------------	-----------------------------	---

RNAV (GPS) RWY 29

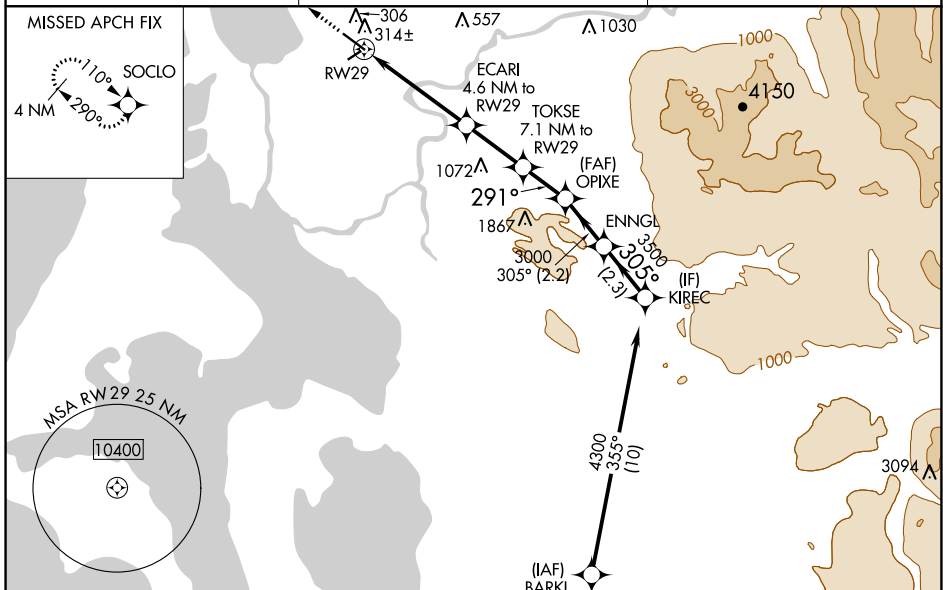
SKAGIT RGNL (BVS)

RNP APCH.

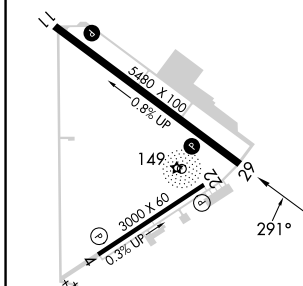
⚠ For uncompensated Baro-VNAV systems, LNAV/VNAV NA below -15°C or above 54°C.
⚠ Baro-VNAV and VDP NA when using Friday Harbor altimeter setting. When local altimeter setting not received use Friday Harbor altimeter setting; increase LPV DA to 438 feet, LNAV/VNAV DA to 536 feet and all Cats visibility ¼ SM; increase all MDA 60 feet.

MISSED APPROACH: Climb to 4000 direct SOCLO and hold, continue climb-in-hold to 4000.

AWOS-3 121.125	WHIDBEY APP CON 120.7 270.8	UNICOM 123.075 (CTAF)
--------------------------	---------------------------------------	---------------------------------



ELEV 145	TDZE 127
----------	----------



LIRL Rwy 4-22
 REIL Rws 11 and 29
 MIRL Rwy 11-29

4000	SOCLO						
*LNAV only		ECARI 4.6 NM to RWY 29	TOKSE 7.1 NM to RWY 29	OPIXE 3000	ENNGL 3000	KIREC 4300	
		1600*	2400*	3000	3500	4300	
		1.4 NM	3.2 NM	2.5 NM	1.9 NM	2.2 NM	2.3 NM
CATEGORY	A	B	C	D			
LPV DA	377-7/8		250 (300-7/8)				
LNAV/VNAV DA	475-1 1/4		348 (400-1 1/4)				
LNAV MDA	580-1	453 (500-1)	580-1 3/8	453 (500-1 3/8)			

NW-1, 11 JUL 2024 to 08 AUG 2024

NW-1, 11 JUL 2024 to 08 AUG 2024