

TUCSON DEP CON  
118.75 269.55  
ASOS  
121.125  
UNICOM  
122.8

TUCSON  
116.0 TUS  
Chan 107

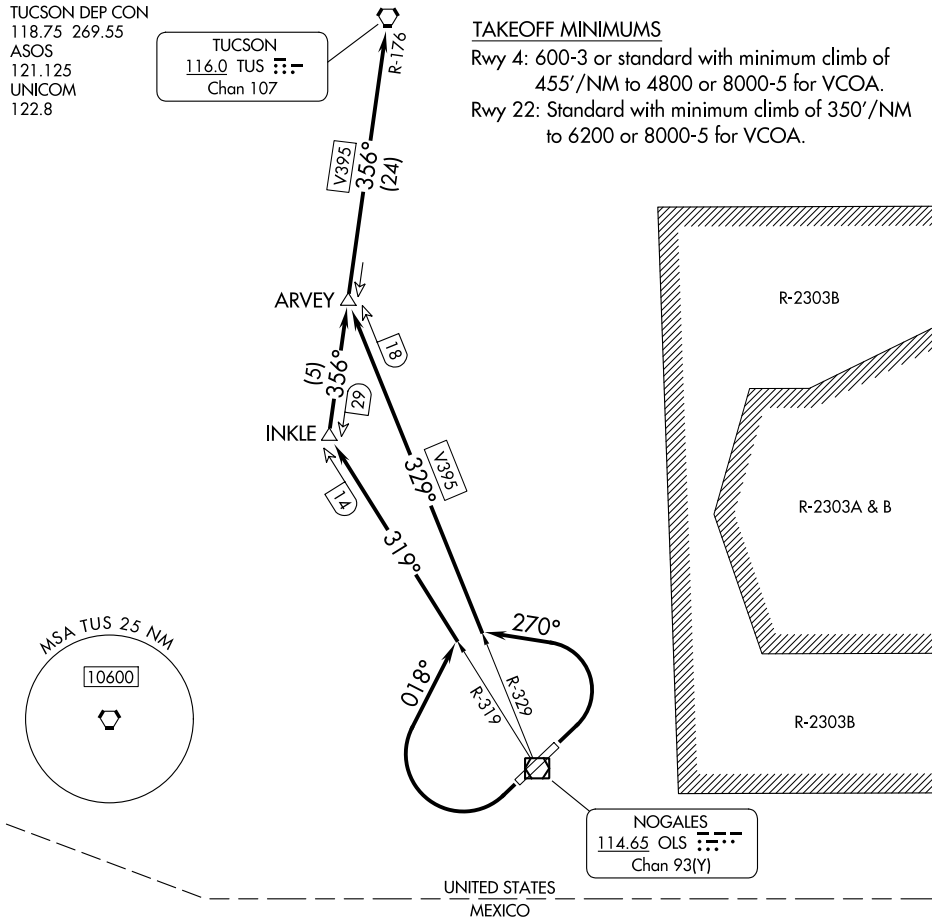
TAKEOFF MINIMUMS

Rwy 4: 600-3 or standard with minimum climb of 455'/NM to 4800 or 8000-5 for VCOA.

Rwy 22: Standard with minimum climb of 350'/NM to 6200 or 8000-5 for VCOA.

SW-4, 11 JUL 2024 to 08 AUG 2024

SW-4, 11 JUL 2024 to 08 AUG 2024



NOGALES  
114.65 OLS  
Chan 93(Y)

UNITED STATES  
MEXICO

NOTE: Chart not to scale.

(CONTINUED ON FOLLOWING PAGE)

**DEPARTURE ROUTE DESCRIPTION**

TAKEOFF RUNWAY 4: Climbing left turn heading 270° to intercept OLS VOR/DME R-329 to ARVEY INT/OLS 18 DME, thence. . . .

TAKEOFF RUNWAY 22: Climbing right turn heading 018° to intercept OLS VOR/DME R-319 to INKLE INT/OLS 14 DME, to TUS R-176 to ARVEY INT/OLS 18 DME, thence. . . .

VCOA ALL RUNWAYS: Obtain ATC approval for VCOA when requesting IFR clearance. Climb in visual conditions to cross Nogales Intl Airport at or above 11800, Max 210K, before proceeding on course, thence. . . .

. . . .on TUS VORTAC R-176 to cross TUS VORTAC at or above MEA/MCA for assigned route of flight.