

WAAS CH 93920	APP CRS 308°	Rwy Idg TDZE Apt Elev	4010 1123 1123
-------------------------	------------------------	-----------------------------	---

RNAV (GPS) RWY 31

LITTLE FALLS/MORRISON COUNTY-LINDBERGH FLD (LXL)

RNP APCH.

⚠ Baro-VNAV NA when using St Cloud altimeter setting. For uncompensated Baro-VNAV systems, LNAV/VNAV NA below -17°C or above 32°C. Rwy 31 visibility reduction below ¼ SM by helicopters NA. When local altimeter setting not received, use St. Cloud altimeter setting and increase all DAs 76 feet and all MDAs 80 feet; increase LPV all Cats visibility ½ SM and LNAV/VNAV all Cats, LNAV Cat C/D and Circling Cat C/D visibility ¼ SM. Circling Rwy 18, 36 NA.

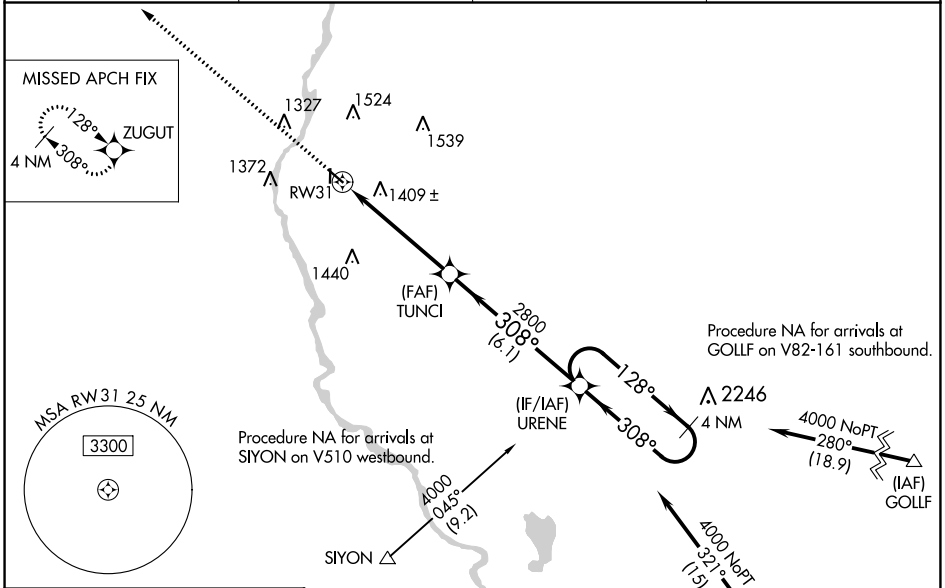
MISSED APPROACH:
Climb to 3000 direct ZUGUT and hold.

AWOS-3
119.45

MINNEAPOLIS CENTER
118.05 239.0

GCO
121.725

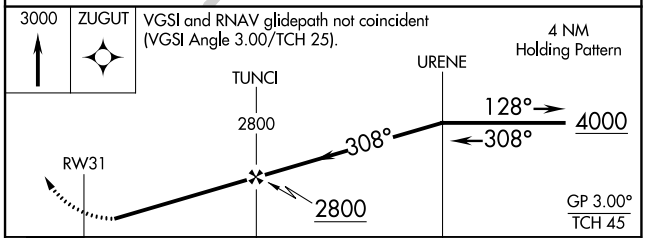
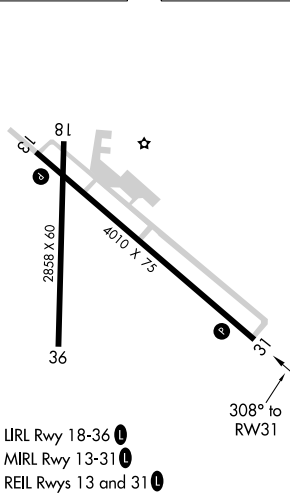
UNICOM
122.8 (CTAF) 0



NC-1, 11 JUL 2024 to 08 AUG 2024

NC-1, 11 JUL 2024 to 08 AUG 2024

ELEV 1123 **D** TDZE 1123



CATEGORY	A	B	C	D
LPV DA		1517-1 ³ / ₈	394 (400-1 ³ / ₈)	
LNAV/VNAV DA		1749-2 ¹ / ₄	626 (700-2 ¹ / ₄)	
LNAV MDA	1660-1	537 (600-1)	1660-1 ¹ / ₂	537 (600-1 ¹ / ₂)
CIRCLING	1700-1 577 (600-1)	1800-1 677 (700-1)	1840-2 717 (800-2)	2000-2 ³ / ₄ 877 (900-2 ³ / ₄)

RNAV (GPS) RWY 31