

WAAS CH 81935 W26A	APP CRS 259°	Rwy Idg TDZE Apt Elev	4051 696 698
--	------------------------	-----------------------------	---

RNAV (GPS) RWY 26

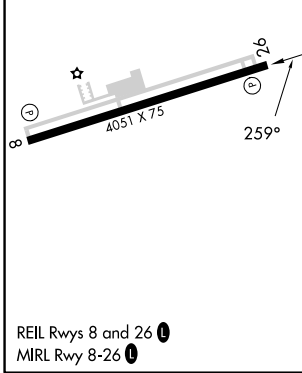
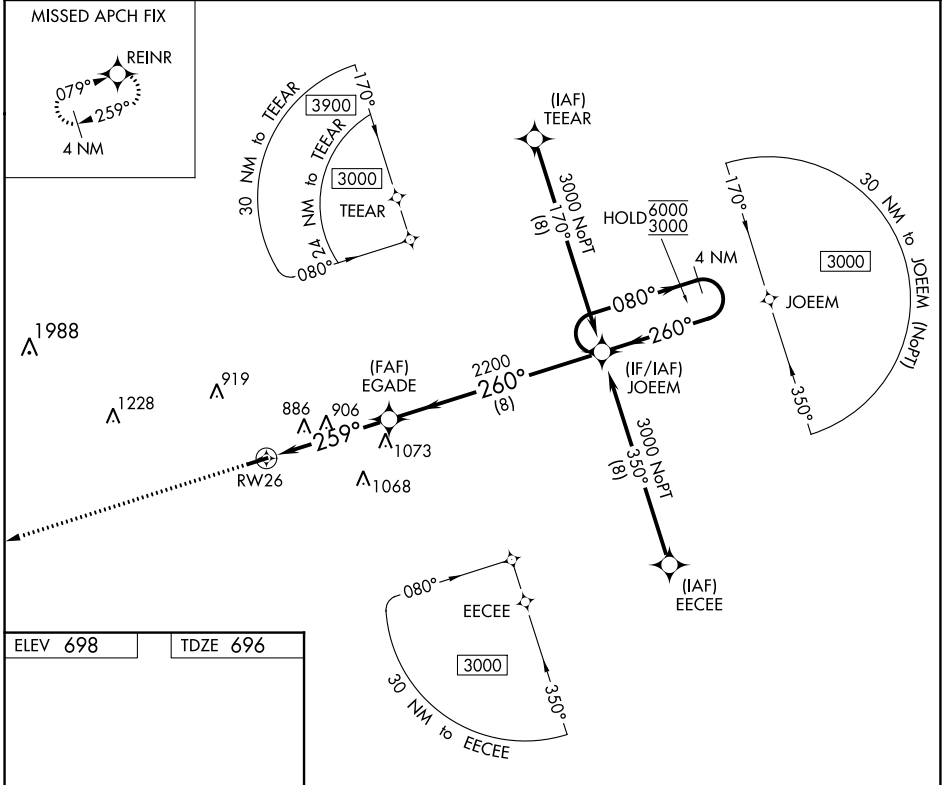
LAURENS COUNTY (LUX)

RNP APCH-GPS.

▼ Rwy 26 helicopter visibility reduction below 3/4 SM NA.

MISSED APPROACH: Climb to 3000 direct REINR and hold.

AWOS-3 123.975	GREER APP CON ★ 120.6 350.2	UNICOM 122.8 (CTAF) 0
--------------------------	---------------------------------------	---------------------------------



3000	REINR	VGSI and descent angles not coincident (VGSI Angle 3.25/TCH 53).	4 NM Holding Pattern
CATEGORY	A	B	C
LP MDA	1160-1	464 (500-1)	NA
LNAV MDA	1160-1	464 (500-1)	NA
CIRCLING	1200-1	502 (600-1)	NA

SE-2, 11 JUL 2024 to 08 AUG 2024

SE-2, 11 JUL 2024 to 08 AUG 2024