

(BYTER1.BYTER) 23166

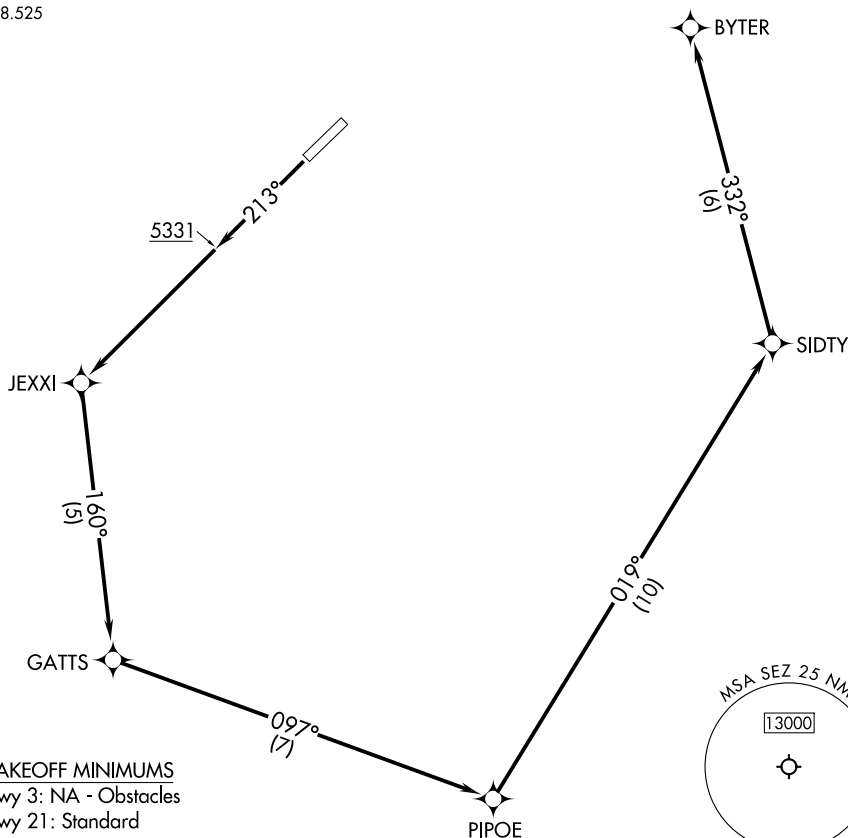
BYTER ONE DEPARTURE (OBSTACLE) (RNAV)

AL-6169 (FAA)

SEDONA (SEZ)
SEDONA, ARIZONA

PHOENIX DEP CON
126.375 236.775
AWOS-3PT
118.525

RNAV 1 - GPS



TAKEOFF MINIMUMS
Rwy 3: NA - Obstacles
Rwy 21: Standard

TAKEOFF OBSTACLE NOTES

Rwy 21: Trees, terrain, light poles, vegetation, fence beginning from DER, 94' left of centerline, up to 12' AGL/4758' MSL.

Light poles 9' from DER, 93' right of centerline, 4' AGL/4737' MSL.

Vegetation 16' from DER, 173' right of centerline, 4738' MSL.

Vegetation, trees, fence beginning 19' from DER, 144' left of centerline, up to 4760' MSL.

Pole and vegetation beginning 31' from DER, 130' right of centerline, up to 21' AGL/4743' MSL.

NOTE: Chart not to scale

DEPARTURE ROUTE DESCRIPTION

TAKEOFF RUNWAY 21: Climb on heading 213° to 5331, then climb direct JEXXI, then climbing left turn on track 160° to GATTS, then on track 097° to PIPOE, then on track 019° to SIDTY, then on track 332° to cross BYTER at or above MEA for route of flight.

SW-4, 11 JUL 2024 to 08 AUG 2024

SW-4, 11 JUL 2024 to 08 AUG 2024

BYTER ONE DEPARTURE (OBSTACLE) (RNAV)

(BYTER1.BYTER) 15JUN23

SEDONA, ARIZONA
SEDONA (SEZ)