

APP CRS	Rwy Idg	<b>5659</b>
<b>324°</b>	TDZE	<b>315</b>
	Apt Elev	<b>316</b>

# RNAV (GPS) RWY 33

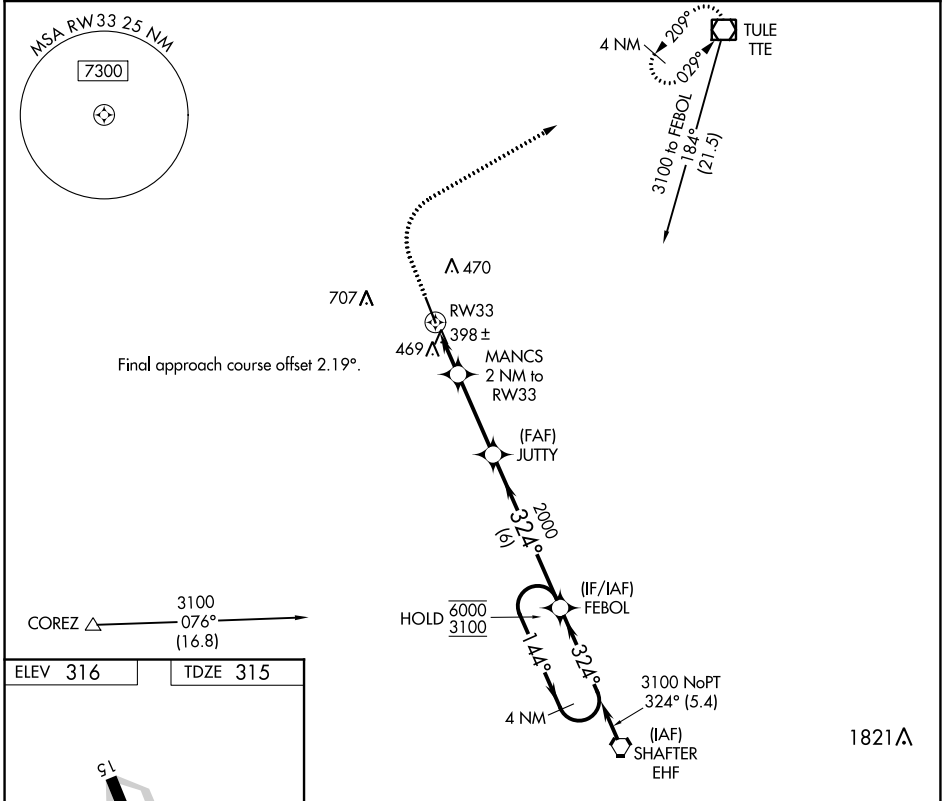
DELANO MUNI (DLO)

RNP APCH - GPS.

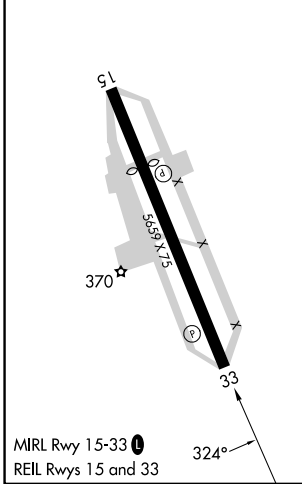
⚠ Circling NA southwest of Rwy 15-33.  
 ⚠ When local altimeter setting not received, procedure NA.

MISSED APPROACH: Climb to 800 then climbing right turn to 3100 direct TTE VOR/DME and hold.

AWOS-3P <b>119.55</b>	BAKERSFIELD APP CON ★ <b>118.9</b>	UNICOM <b>122.8 (CTAF)</b> ①
--------------------------	---------------------------------------	---------------------------------



ELEV 316	TDZE 315
----------	----------



800	3100	TTE	VGSIs and descent angles not coincident.	
↑	↻	☐	MANCS 2 NM to RW33	JUTTY
			1.2 NM to RW33	FEBOL
			0.9 NM	4 NM Holding Pattern
			3.00° TCH 40	6000
			324°	3100
			1000	
			2000	
			3.1 NM	6 NM
CATEGORY	A	B	C	D
LNAV MDA	720-1	405 (500-1)	720-1½	405 (500-1½)
CIRCLING	760-1	780-1	820-1½	960-2
	444 (500-1)	464 (500-1)	504 (600-1½)	644 (700-2)

SW-3, 11 JUL 2024 to 08 AUG 2024

SW-3, 11 JUL 2024 to 08 AUG 2024