

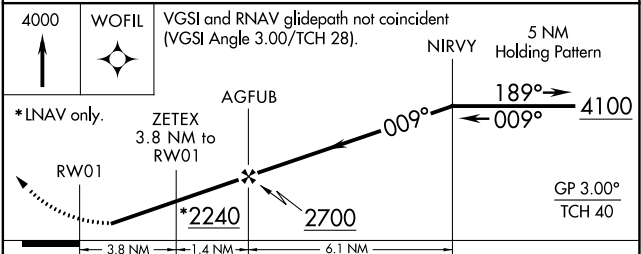
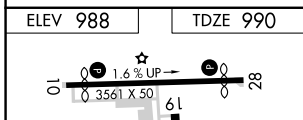
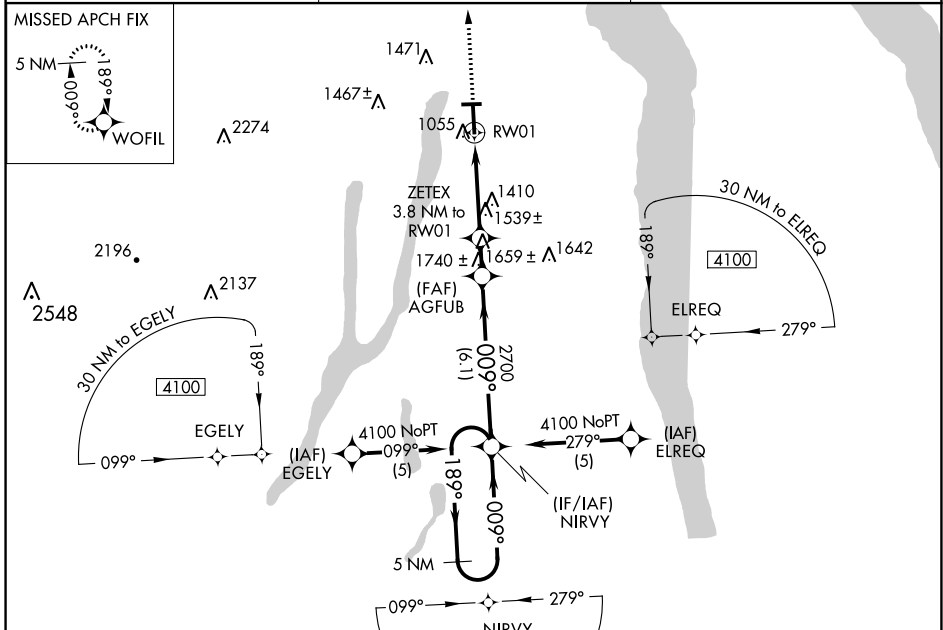
WAAS CH <b>99507</b> W01A	APP CRS <b>009°</b>	Rwy ldg TDZE Apt Elev	<b>5499</b> <b>990</b> <b>988</b>
---------------------------------	------------------------	-----------------------------	---

**RNAV (GPS) RWY 1**  
PENN YAN/YATES COUNTY (P.E.O)

**⚠** When local altimeter setting not received, use Elmira altimeter setting: increase LPV DA to 1433 feet and visibility all Cats ¼ SM; increase all MDA 80 feet and visibility LNAV Cat A and Circling Cat C ¼ SM and LNAV Cat C and D ½ SM. DME/DME RNP-0.3 NA. Helicopter visibility reduction below ¾ SM NA.

**⚠** MISSED APPROACH: Climb to 4000 direct WOFIL and hold, continue climb in hold to 4000.

ASOS <b>121.175</b>	ELMIRA APP CON* <b>124.3 257.8</b>	UNICOM <b>123.0 (CTAF) 0</b>
------------------------	---------------------------------------	---------------------------------



CATEGORY	A	B	C	D
LPV DA	1360-1¼ 370 (400-1¼)			
LNAV MDA	1800-1 810 (900-1)	1800-1¼ 810 (900-1¼)	1800-2¼ 810 (900-2¼)	1800-2½ 810 (900-2½)
CIRCLING	1800-1¼	812 (900-1¼)	1820-2½ 832 (900-2½)	1980-3 992 (1000-3)

NE-2, 11 JUL 2024 to 08 AUG 2024

NE-2, 11 JUL 2024 to 08 AUG 2024