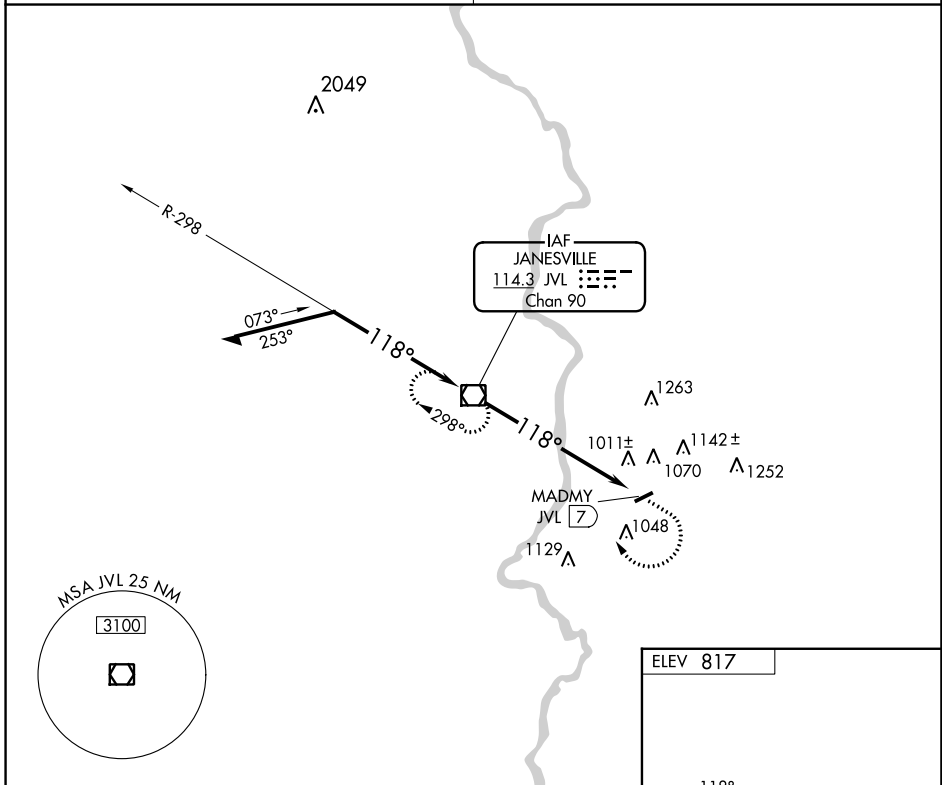


VOR/DME JVL 114.3 Chan 90	APP CRS 118°	Rwy Idg TDZE Apt Elev	N/A N/A 817
---	------------------------	-----------------------------	--

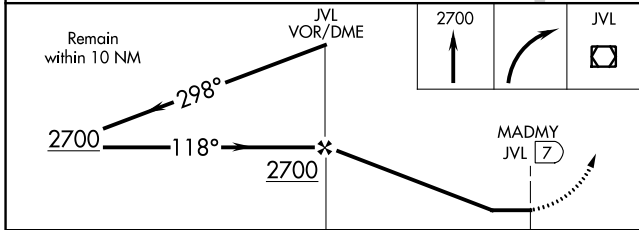
VOR-A
BELOIT (44C)

<p>V Use Janesville altimeter setting, when not received, use Chicago/Rockford Intl altimeter setting.</p> <p>NA</p>	<p>MISSED APPROACH: Climb to 2700 then right turn direct JVL VOR/DME and hold.</p>
<p>ROCKFORD APP CON 121.0 327.0</p>	<p>UNICOM 122.7 (CTAF) 0</p>



EC-3, 11 JUL 2024 to 08 AUG 2024

EC-3, 11 JUL 2024 to 08 AUG 2024



ELEV 817

LIRL Rwy 7-25 0

FAF to MAP 7 NM	
Knots	60 90 120 150 180
Min:Sec	7:00 4:40 3:30 2:48 2:20

CATEGORY	A	B	C	D
CIRCLING	1440-1 623 (700-1)	1540-1 723 (800-1)		NA
CHICAGO/ROCKFORD INTL ALTIMETER SETTING MINIMUMS				
CIRCLING	1480-1 663 (700-1)	1580-1 763 (800-1)		NA